

8

7

6

5

4

3

2

1

THE INFORMATION CONTAINED IN THIS DRAWING IS THE SOLE PROPERTY OF ANDERSON POWER PRODUCTS. ANY REPRODUCTION IN PART OR WHOLE WITHOUT THE WRITTEN PERMISSION OF ANDERSON POWER PRODUCTS IS PROHIBITED.

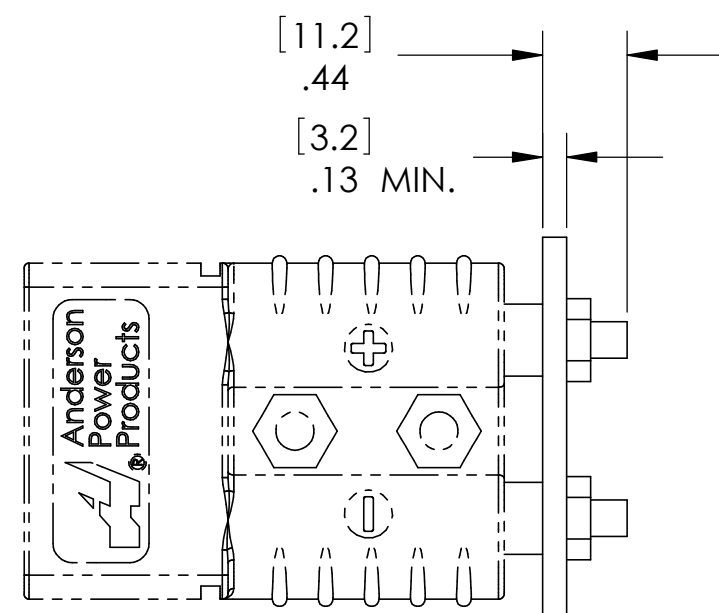
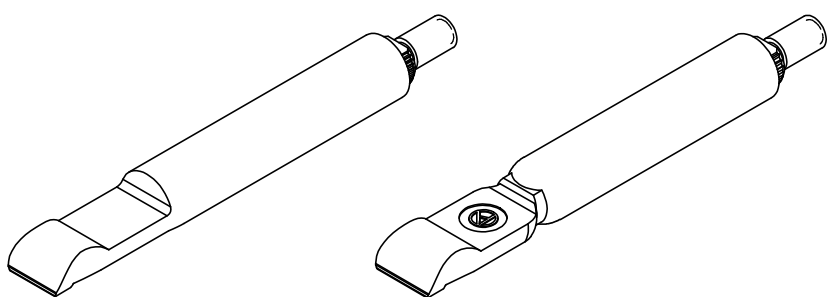
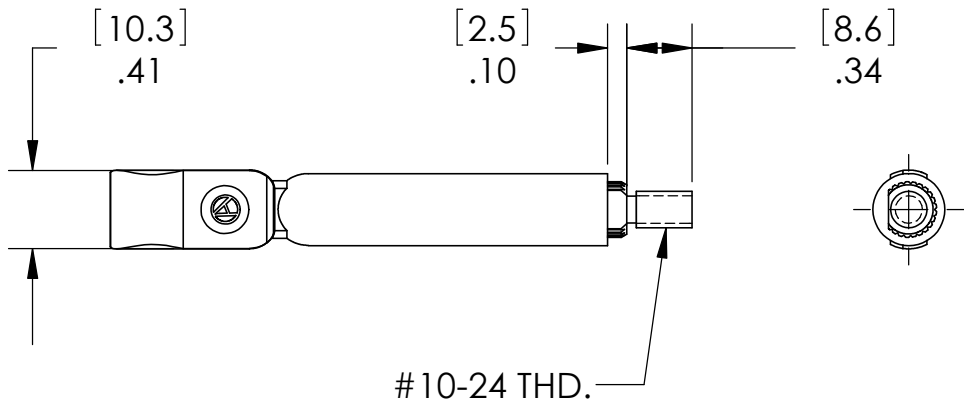
Copyright 2004

ANDERSON POWER PRODUCTS RESERVES THE RIGHT TO ALTER PRODUCT TYPES, THEIR TECHNICAL DATA, DIMENSION, STYLE AND ACCESSORIES WITHOUT PRIOR NOTIFICATION.

E

E

ALTERNATE ACCEPTABLE GEOMETRIES

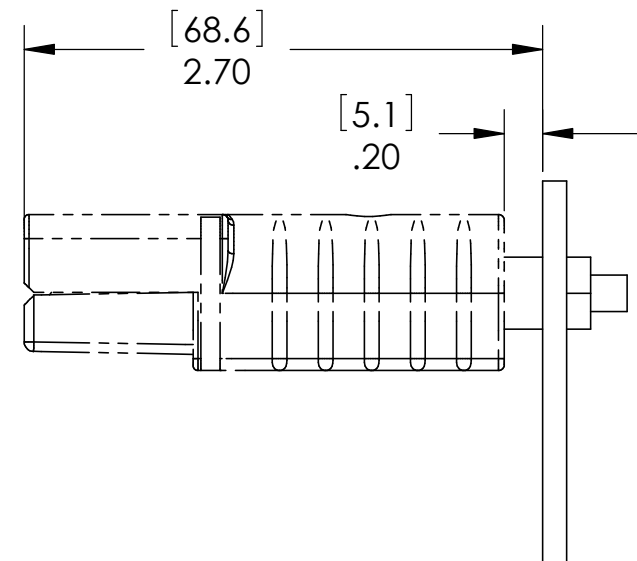
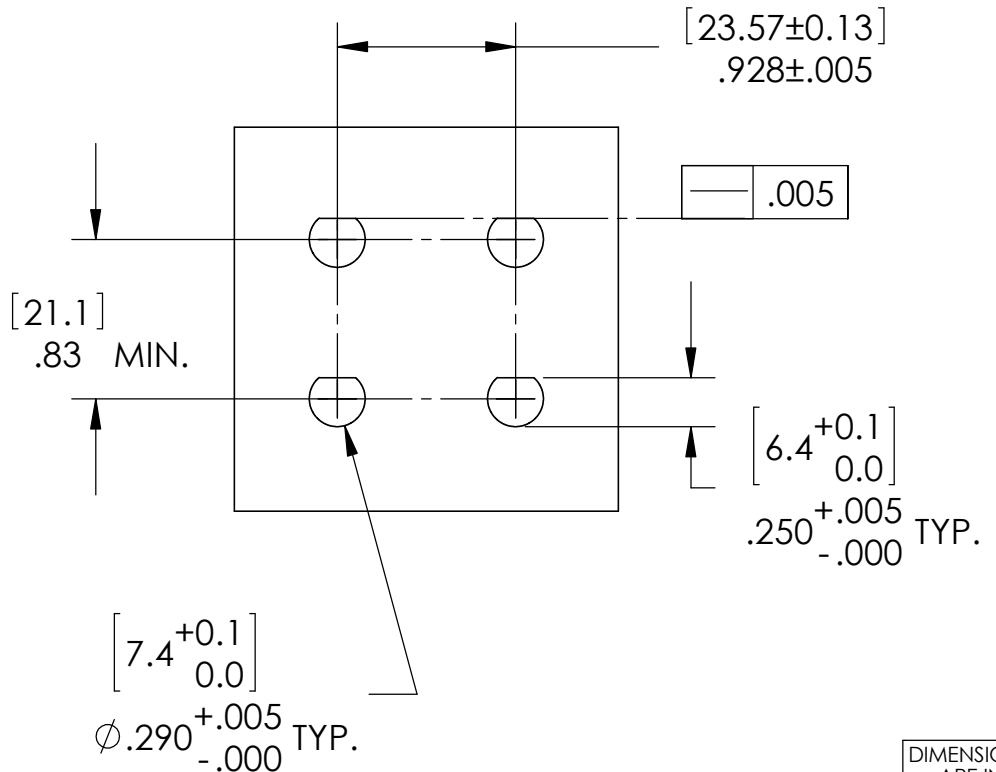
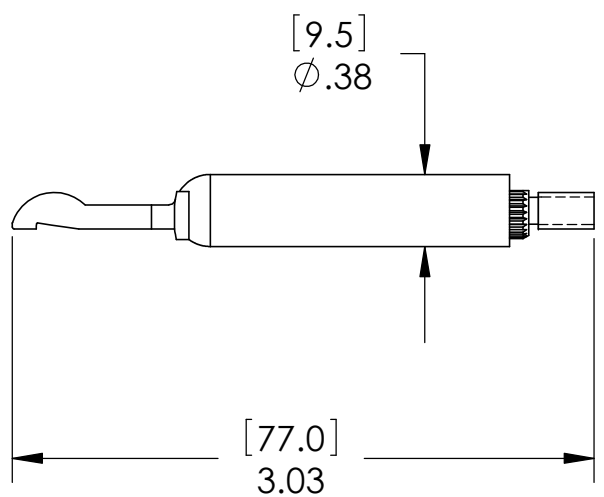


D

D

C

C



B

B

A

A

- NOTES:
 1. TIGHTENING TORQUE = 12 IN-LBS
 2. CONTACT MATERIAL = COPPER ALLOY
 FINISH = SILVER PLATE

REV.	DESCRIPTION OF CHANGES	APPROVED	DATE
4	ECRN 14489 - REMOVED KITS, CHANGED TITLE TO SB120	JRW	9/29/09
3	ECRN 14181 - UPDATE TO FORMED GEOMETRY	AMS	10/09/07
2	ECRN 13843 - MODIFY D-SHAPE TOLERANCES	AMP	6/6/05
1	ECRN 13789 - MODIFY TPRQUE SPECS.	AMP	6/3/05

DIMENSIONS ARE IN:	INCH[MM]	APPROVALS		 ANDERSON POWER PRODUCTS TITLE SB120 BUS BAR ASSEMBLY OUTLINE
UNLESS OTHERWISE STATED		DRAWN	AMP 9/18/04	
TOLERANCES:		CHECKED	DJD 9/30/04	
DECIMALS (INCH) DECIMALS (MM) ANGLES		MFG APP	DAM 9/30/04	
.XX ±.02 .X ±.5 ±2°		QC APP	RPO 9/30/04	
SURFACE FINISH:		ENG APP	MAW 9/30/04	
MACHINED 128 [3.2] ✓		MATERIAL: SEE NOTE 2		
MOLDED 64 [1.6] ✓		FINISH: SEE NOTE 2		
SIZE		DWG NO. B01997S1		REV. 4
SCALE NONE		CADFILE 02142		SHEET 1 OF 1

8

7

6

5

4

3

2

1