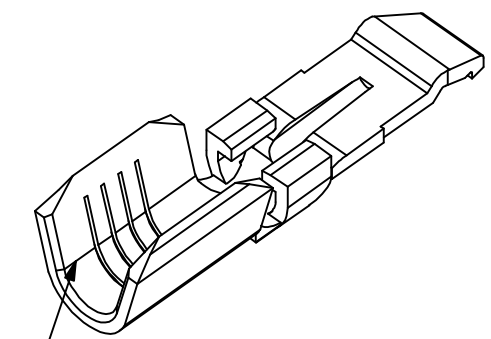
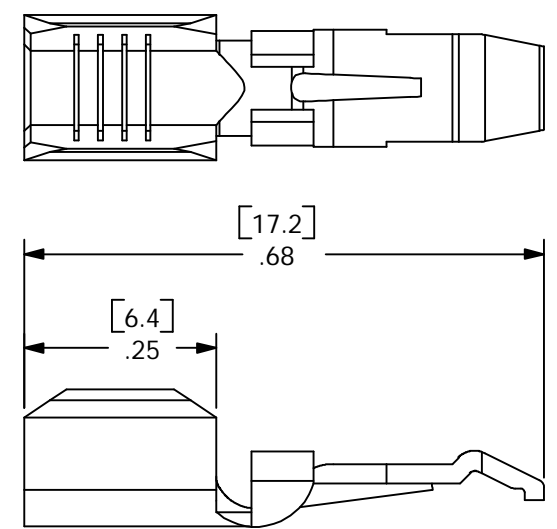
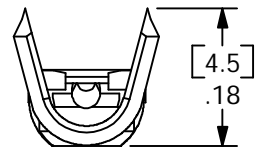
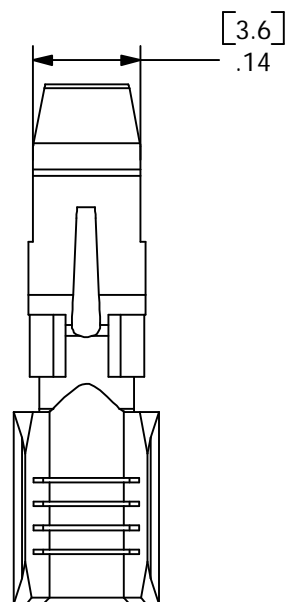


8 7 6 5 4 3 2 1

THE INFORMATION CONTAINED IN THIS DRAWING IS THE SOLE PROPERTY OF ANDERSON POWER PRODUCTS. ANY REPRODUCTION IN PART OR WHOLE WITHOUT THE WRITTEN PERMISSION OF ANDERSON POWER PRODUCTS IS PROHIBITED.

ANDERSON POWER PRODUCTS RESERVES THE RIGHT TO ALTER PRODUCT TYPES, THEIR TECHNICAL DATA, DIMENSION, STYLE AND ACCESSORIES WITHOUT PRIOR NOTIFICATION.

REV.	DESCRIPTION OF CHANGES	BY:	DATE
2	ECRN 13223: REDRAWN	CMS	6/29/99
3	ECRN 13433	CMS	10/23/01



FOR #12-16 WIRE

D
C
B
A

ITEM NO.	PART OR IDENTIFYING NO.	NOMENCLATURE OR DESCRIPTION	MATERIAL SPECIFICATION	QTY REQD
COPYRIGHT 1999 ANDERSON POWER PRODUCTS. ALL RIGHTS RESERVED. UNAUTHORIZED REPRODUCTION HEREBY PROHIBITED.				
DIMENSIONS ARE IN INCHES DIMENSIONS IN PARENTHESES [] ARE IN MILLIMETERS		CAD GENERATED DRAWING, DO NOT MANUALLY UPDATE		ANDERSON POWER PRODUCTS
TOLERANCES ARE: 2PL- ±.02 [±.5]		APPROVALS	DATE	
MATERIALS: <i>COPPER</i>		DRAWN	RLE 9/9/97	
FINISH: <i>HOT TIN DIP</i>		CHECKED	DJD 10/9/01	
NEXT ASSY	USED ON	RESP ENG	UFN 9/10/97	CATALOG NUMBER 269G1 15-45 AMP HIGH DETENT CONTACT FOR REEL TYPE "F" CRIMP #12-16 WIRE
APPLICATION	DO NOT SCALE DRAWING	MFG ENG	CHB 10/21/01	
		QUAL ENG	DJM 9/18/97	SIZE A
				SPECIFICATION: 113967S1
				REV. 3
		SCALE	NONE	CADFILES/01061
				SHEET 1 OF 1

8 7 6 5 4 3 2 1