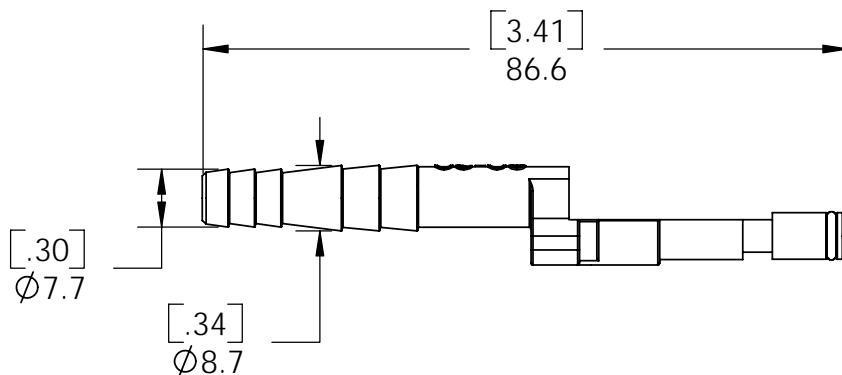
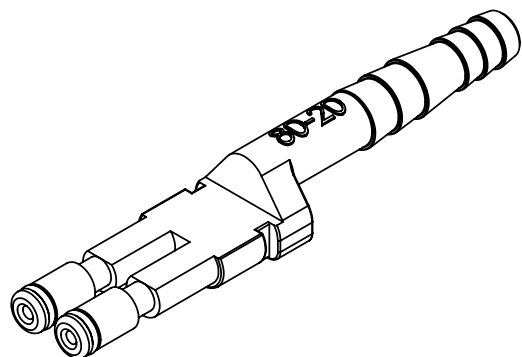
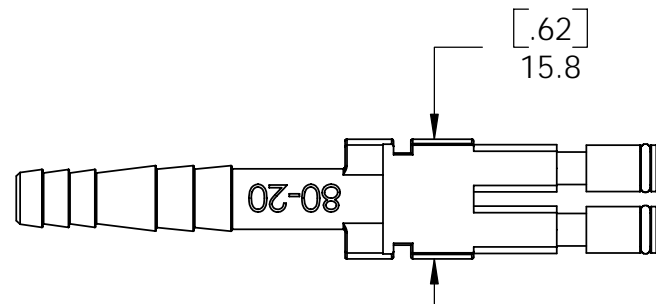
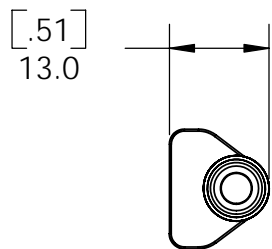


THE INFORMATION CONTAINED IN THIS DRAWING IS THE SOLE PROPERTY OF ANDERSON POWER PRODUCTS. ANY REPRODUCTION IN PART OR WHOLE WITHOUT THE WRITTEN PERMISSION OF ANDERSON POWER PRODUCTS IS PROHIBITED.

Copyright 2006

ANDERSON POWER PRODUCTS RESERVES THE RIGHT TO ALTER PRODUCT TYPES, THEIR TECHNICAL DATA, DIMENSION, STYLE AND ACCESSORIES WITHOUT PRIOR NOTIFICATION.



DIMENSIONS ARE IN:		MM[INCH]	APPROVALS	
UNLESS OTHERWISE STATED			DRAWN	AMS 01/06/06
TOLERANCES:			CHECKED	DJD 01/10/06
DECIMALS (INCH)	DECIMALS (MM)	ANGLES	MFG APP	CHB 01/09/06
XX ± .02	X ± .5	± 2°	QC APP	UFN 01/09/06
SURFACE FINISH:			ENG APP	DAM 01/06/06
MACHINED	128 [3.2]	✓	SIZE A/A4	
MOLDED	64 [1.6]	✓	DWG NO. E80-20S1	
MATERIAL: SEE B/M			REV. 1	
FINISH: SEE B/M			SCALE NONE	

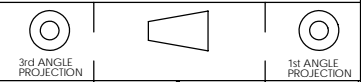
ANDERSON POWER PRODUCTS

SALES OUTLINE
TWIN AIR TUBE (MALE)
FOR 80A DIN CONNECTORS

CADFILE 02490

SHEET 1 OF 1

1	ECRN 13956 - CHANGES PER ISIR	AMS	2-9-06
REV.	DESCRIPTION OF CHANGES	APPROVED	DATE



-CAD GENERATED DRAWING-
DO NOT MANUALLY UPDATE
DO NOT SCALE