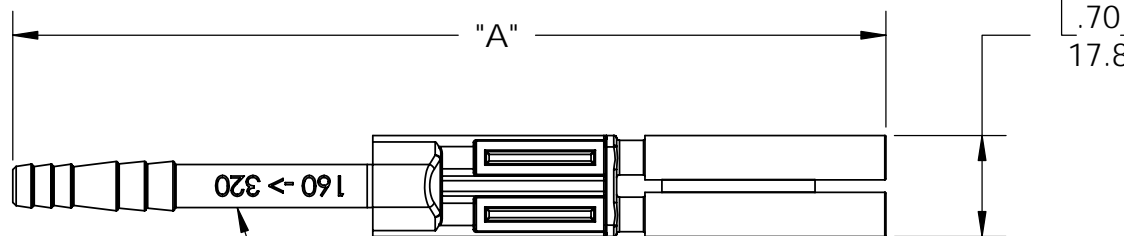
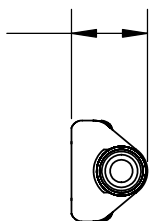


THE INFORMATION CONTAINED IN THIS DRAWING IS THE SOLE PROPERTY OF ANDERSON POWER PRODUCTS. ANY REPRODUCTION IN PART OR WHOLE WITHOUT THE WRITTEN PERMISSION OF ANDERSON POWER PRODUCTS IS PROHIBITED.

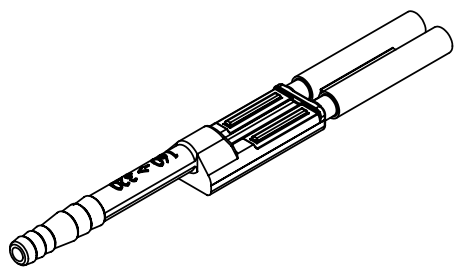
Copyright 2005

ANDERSON POWER PRODUCTS RESERVES THE RIGHT TO ALTER PRODUCT TYPES, THEIR TECHNICAL DATA, DIMENSION, STYLE AND ACCESSORIES WITHOUT PRIOR NOTIFICATION.

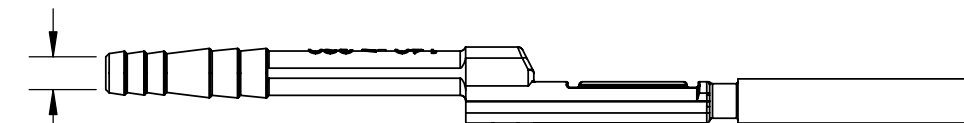
[.53]  
13.4



"160" DENOTES E160-21  
"160 -> 320" DENOTES E320-21




[.23]  
Ø5.8



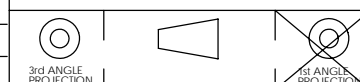
PART NO.	DESCRIPTION	"A"
E160-21	160A FEMALE AIR TUBE	138.2[6.05]
E320-21	320A FEMALE AIR TUBE	153.7[5.44]

DIMENSIONS ARE IN:	<del>INCH[MM]</del>	MM[INCH]
UNLESS OTHERWISE STATED		
TOLERANCES:		
DECIMALS (INCH)	DECIMALS (MM)	ANGLES
XX ± .02	X ± .5	± 2°
SURFACE FINISH:		
MACHINED	128 [3.2]	✓
MOLDED	64 [1.6]	✓
MATERIAL: PBT		
FINISH: N/A		

APPROVALS	
DRAWN	AMP 7/6/05
CHECKED	LH 7/11/05
MFG APP	CHB 7/6/05
QC APP	FR 7/13/05
ENG APP	DAM 7/6/05

 <b>ANDERSON POWER PRODUCTS</b>		
TITLE		
<b>SALES OUTLINE</b> TWIN AIR TUBE (FEMALE) 160A & 320A DIN CONNECTORS		
SIZE	DWG NO.	REV.
A/A4	E320-21S1	1

1	ECRN 13957 - CHANGES PER ISIR	AMS	2/9/06
REV.	DESCRIPTION OF CHANGES	APPROVED	DATE



-CAD GENERATED DRAWING-  
DO NOT MANUALLY UPDATE  
DO NOT SCALE

SCALE	CADFILE	SHEET
NONE	02361	1 OF 1