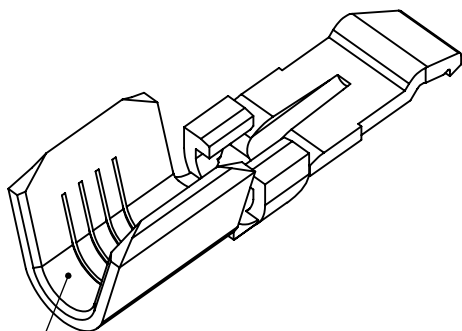


8 7 6 5 4 3 2 1

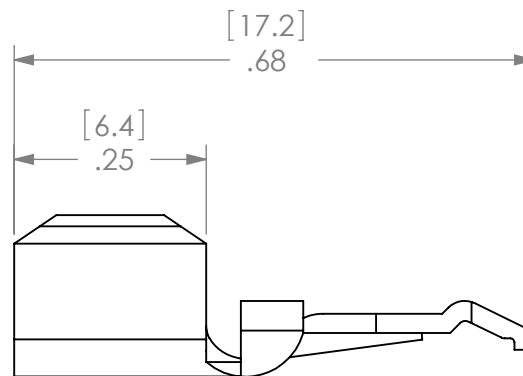
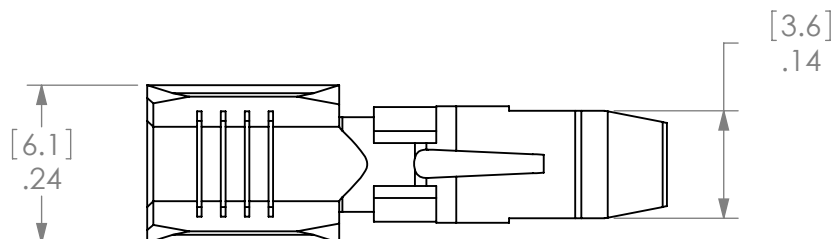
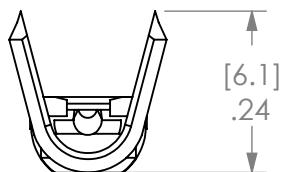
THE INFORMATION CONTAINED IN THIS DRAWING IS THE SOLE PROPERTY OF ANDERSON POWER PRODUCTS. ANY REPRODUCTION IN PART OR WHOLE WITHOUT THE WRITTEN PERMISSION OF ANDERSON POWER PRODUCTS IS PROHIBITED.

Copyright 1999

ANDERSON POWER PRODUCTS RESERVES THE RIGHT TO ALTER PRODUCT TYPES, THEIR TECHNICAL DATA, DIMENSION, STYLE AND ACCESSORIES WITHOUT PRIOR NOTIFICATION.



BARREL SIZED FOR #10-14 AWG WIRE



CAT. NO.	PLATING
201G1H	HOT TIN DIP
201G3H	SILVER

DIMENSIONS ARE IN:	INCH [MM]	<i>APPROVALS</i>			ANDERSON POWER PRODUCTS	
UNLESS OTHERWISE STATED		DRAWN	GN		6/30/1999	TITLE
TOLERANCES:		CHECKED	DJD	9/19/2000	CATALOG #201G	
DECIMALS (INCH)	DECIMALS (MM)	ANGLES	MFG APPRV	CHB	9/18/2000	HIGH DETENT REEL CONTACT
.XX ± .02	.X ± .5	±2°	QC APPRV	UFN	9/20/2000	FOR POWERPOLES
SURFACE FINISH:			ENG APPRV	RPO	9/19/2000	TYPE "F" CRIMP
MACHINED	128µin [3.2µ]		SIZE	A	DWG NO.	REV.
MOLDED	64µin [1.6µ]		NONE		114117S1	2
MATERIAL:	COPPER		SCALE	NONE	CADFILE	SHEET
FINISH:	SEE TABLE				00982	1 OF 1
			-CAD GENERATED DRAWING- DO NOT MANUALLY UPDATE DO NOT SCALE			

REV.	DESCRIPTION	APPRV	DATE
2	ECRN-15554 ADDED TABLE WITH 201G3H	TWE	1/21/2014
1	ECRN-14110 REDRAWN	AMS	3/1/07

REVISIONS

8 7 6 5 4 3 2 1