

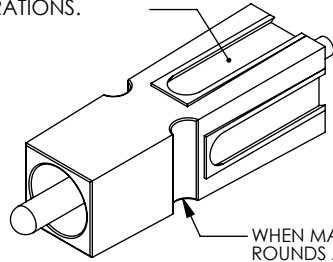
THE INFORMATION CONTAINED IN THIS DRAWING IS THE SOLE PROPERTY OF ANDERSON POWER PRODUCTS. ANY REPRODUCTION IN PART OR WHOLE WITHOUT THE WRITTEN PERMISSION OF ANDERSON POWER PRODUCTS IS PROHIBITED.

Copyright 2009

ANDERSON POWER PRODUCTS RESERVES THE RIGHT TO ALTER PRODUCT TYPES, THEIR TECHNICAL DATA, DIMENSION, STYLE AND ACCESSORIES WITHOUT PRIOR NOTIFICATION.

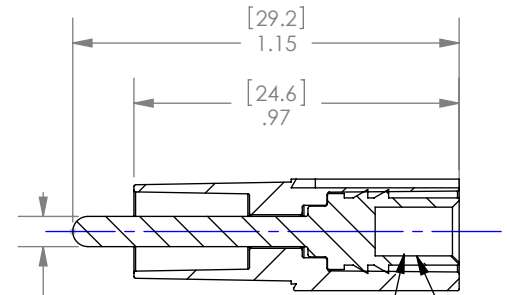
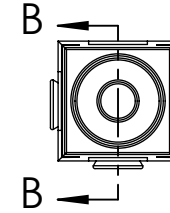
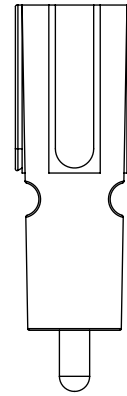
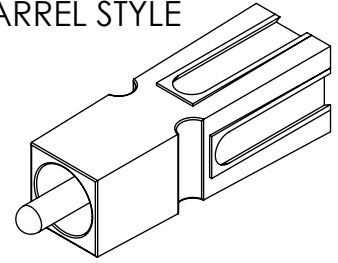
PCB TAIL STYLE

DOVETAILS ALLOW STACKING IN VERTICAL, HORIZONTAL, OR IN BLOCK CONFIGURATIONS.



WHEN MATED SIDE TO SIDE, HALF-ROUNDS ALIGN TO FORM A SLOT FOR ROLL PIN INSERTION, WHICH PROTECTS AGAINST ACCIDENTAL DISLODGING OF MATED HOUSINGS.

CRIMP BARREL STYLE

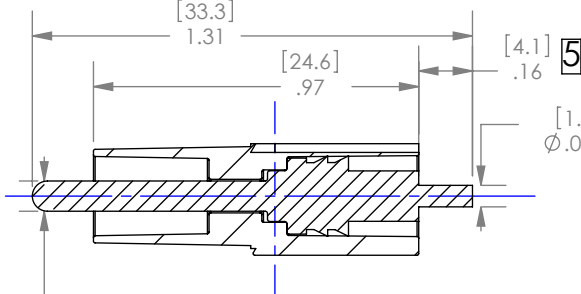
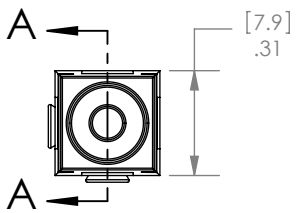
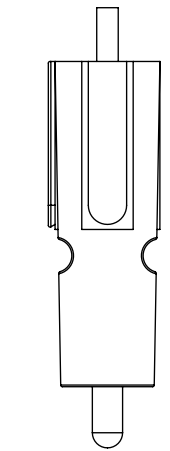


Ø [3.3 X 6.4 DP]
Ø .13 X .25 DP

SECTION B-B

NOTE: CONTACT MUST BE CRIMPED ONTO WIRE BEFORE CONTACT IS INSERTED INTO THE HOUSING

①



SECTION A-A

ORDERING INFORMATION FOR CONTACT/HOUSING SETS		
CAT NO.	TERM. STYLE	PLATING
PP30MF-P10T	CRIMP	TIN
PP30MF-P10S	CRIMP	SILVER
PP30MF-PPCT	PCB	TIN
PP30MF-PPCS	PCB	SILVER

DIMENSIONS ARE IN:	INCH [MM]	APPROVALS		<p>ANDERSON POWER PRODUCTS</p> <p>TITLE</p> <p>POWERPOLE 30 AMP GROUND PIN MAKE FIRST, BREAK LAST</p>			
UNLESS OTHERWISE STATED		DRAWN	CMS 1/25/1999				
TOLERANCES:		CHECKED	DJD 1/26/1999				
DECIMALS (INCH) DECIMALS (MM) ANGLES .XX ± .015 .X ± .38 ± 5° .XXX ± .005 .XX ± .13		MFG APPR	CHB 10/21/2001				
SURFACE FINISH:		QC APPR	RPO 10/10/2001	SIZE A DWG NO. 113919S2 REV. 5			
MACHINED 128µin [3.2µ] MOLDED 64µin [1.6µ]		ENG APPR	UFN 10/22/2001				
MATERIAL: SEE NOTES FINISH:		SCALE	1.75:1	CADFILE	01126	SHEET	1 OF 1
		-CAD GENERATED DRAWING- DO NOT MANUALLY UPDATE DO NOT SCALE					

REV.	DESCRIPTION	APPRV	DATE
5	ECRN-15521 CORRECTED PCB PIN OUTLINE	TWE	11/25/2013
4	ECRN-14617 NEW REF DIMENSION	TWE	3/7/11
3	ECRN-13484 ADD CAT. NO. TABLE	CMS	5/16/02
2	ECRN-13433	CMS	10/23/01
1	ECRN-13287 CRIMP NOTE	CMS	1/13/00

REVISIONS