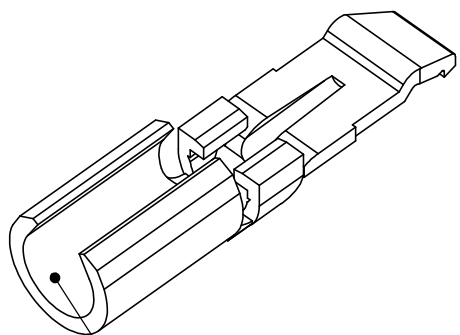


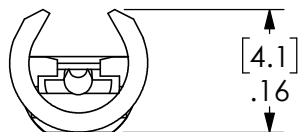
THE INFORMATION CONTAINED IN THIS DRAWING IS THE SOLE PROPERTY OF ANDERSON POWER PRODUCTS. ANY REPRODUCTION IN PART OR WHOLE WITHOUT THE WRITTEN PERMISSION OF ANDERSON POWER PRODUCTS IS PROHIBITED.

**Copyright 2016**

ANDERSON POWER PRODUCTS RESERVES THE RIGHT TO ALTER PRODUCT TYPES, THEIR TECHNICAL DATA, DIMENSION, STYLE AND ACCESSORIES WITHOUT PRIOR NOTIFICATION.

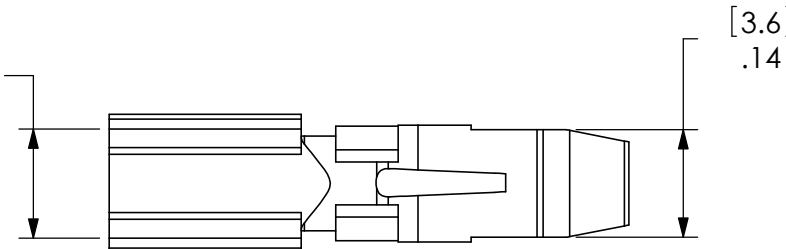


BARREL SIZED FOR #16-20 AWG WIRE

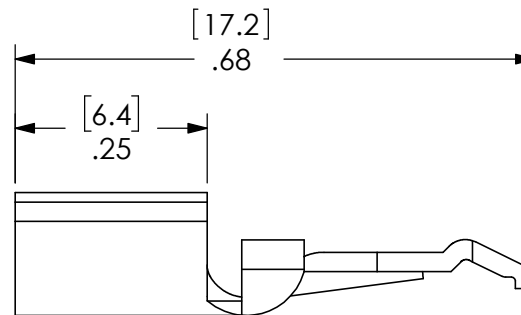


[4.1]  
.16

[3.6]  
.14




[3.6]  
.14



[17.2]  
.68

[6.4]  
.25

DIMENSIONS ARE IN:		INCH [MM]		APPROVALS		ANDERSON POWER PRODUCTS					
UNLESS OTHERWISE STATED				DRAWN	CMS	6/29/1999	 <b>TITLE</b> CATALOG NUMBER 269G2 15 AMP HIGH DENTENT CONTACT FOR REEL TRYPE "F" CRIMP #16-20 WIRE				
TOLERANCES:				CHECKED	DJD	6/30/1999					
DECIMALS (INCH)	DECIMALS (MM)	ANGLES		PM APPRV	CHB	6/30/1999					
.XX ± .02	.X ± .5	±2°		QC APPRV	RPO	6/30/1999					
SURFACE FINISH:				ENG APPRV	UFN	6/30/1999					
MACHINED		128µin [3.2µ]		SIZE		A	DWG NO.	113967S2	REV.	2	
MOLDED		64µin [1.6µ]		SCALE		NONE	CADFILE	01062	SHEET		1 OF 1
MATERIAL:				-CAD GENERATED DRAWING- DO NOT MANUALLY UPDATE DO NOT SCALE		NONE		01062		1 OF 1	
COPPER				3rd ANGLE PROJECTION		NONE		01062		1 OF 1	
FINISH:				3rd ANGLE PROJECTION		NONE		01062		1 OF 1	
HOT TIN DIP				3rd ANGLE PROJECTION		NONE		01062		1 OF 1	

2	ECN 2016-0073	CPD	10/14/2016
REV.	DESCRIPTION OF CHANGES	APPROVED	DATE