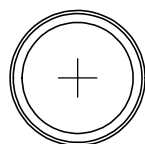
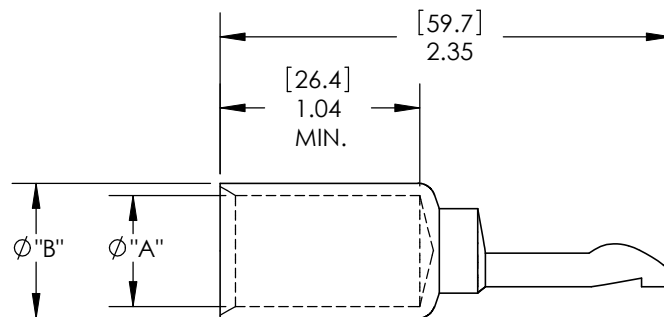
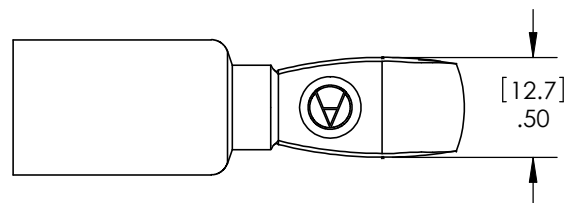
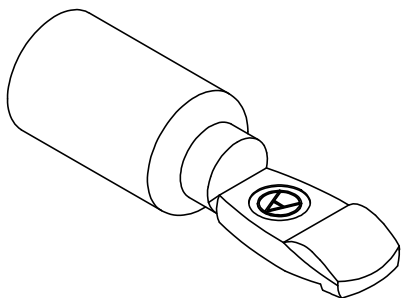


THE INFORMATION CONTAINED IN THIS DRAWING IS THE SOLE PROPERTY OF ANDERSON POWER PRODUCTS. ANY REPRODUCTION IN PART OR WHOLE WITHOUT THE WRITTEN PERMISSION OF ANDERSON POWER PRODUCTS IS PROHIBITED.

Copyright 2009

ANDERSON POWER PRODUCTS RESERVES THE RIGHT TO ALTER PRODUCT TYPES, THEIR TECHNICAL DATA, DIMENSION, STYLE AND ACCESSORIES WITHOUT PRIOR NOTIFICATION.

CAT. NO.	WIRE SIZE	"A"		"B"		FOR USE WITH
		IN	MM	IN	MM	
1328G1	#2/0 AWG	0.49	12.4	0.64	16.3	PP180 HSGS ONLY
1328G2	#3/0 AWG	0.58	14.7	0.70	17.8	



DIMENSIONS ARE IN: INCH[MM]		APPROVALS		ANDERSON POWER PRODUCTS	
UNLESS OTHERWISE STATED		DRAWN	AMS 04/10/09	TITLE PP180 CONTACTS FOR #2/0 & #3/0 AWG	
TOLERANCES:		CHECKED	DJD 04/13/09		
DECIMALS (INCH)	DECIMALS (MM)	ANGLES			
.XX ±.02	.X ±.5	±2°			
SURFACE FINISH:		MFG APP	CHB 04/13/09	SIZE A/A4	
MACHINED	128 [3.2] ✓	QC APP	UFN 04/13/09		
MOLDED	64 [1.6] ✓	ENG APP	DAM 04/10/09	DWG NO.	114857S1
MATERIAL: COPPER ALLOY				SCALE	NONE
FINISH: SILVER PLATE				CADFILE	02895
				REV.	0
				SHEET	1 OF 1

REV.	DESCRIPTION OF CHANGES	APPROVED	DATE
*	*****	***	*****



CAD GENERATED DRAWING
DO NOT MANUALLY UPDATE
DO NOT SCALE