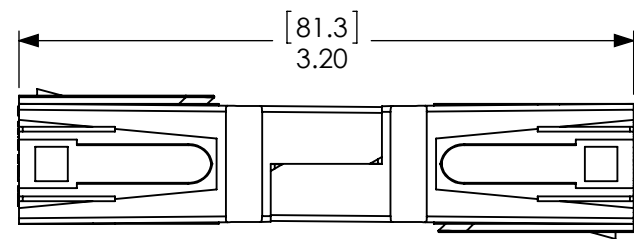
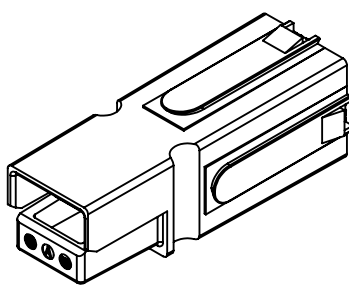
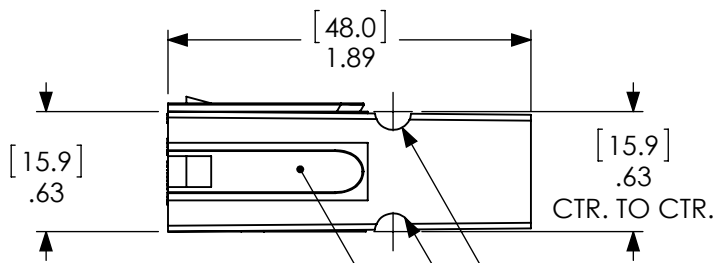


THE INFORMATION CONTAINED IN THIS DRAWING IS THE SOLE PROPERTY OF ANDERSON POWER PRODUCTS. ANY REPRODUCTION IN PART OR WHOLE WITHOUT THE WRITTEN PERMISSION OF ANDERSON POWER PRODUCTS IS PROHIBITED.

**Copyright 2001**

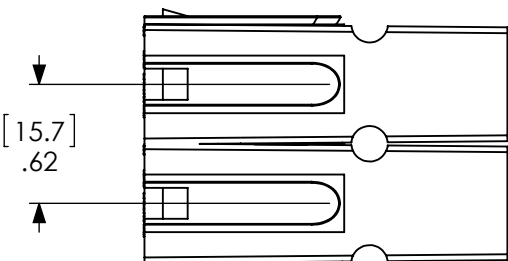
ANDERSON POWER PRODUCTS RESERVES THE RIGHT TO ALTER PRODUCT TYPES, THEIR TECHNICAL DATA, DIMENSION, STYLE AND ACCESSORIES WITHOUT PRIOR NOTIFICATION.



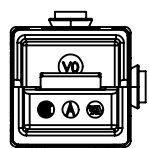
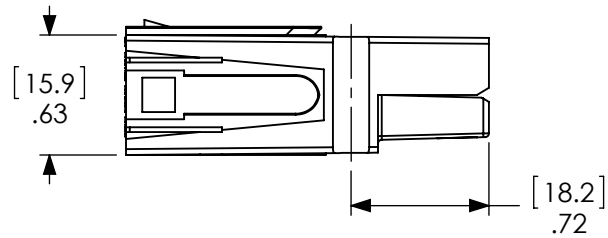
MATED PAIR OF HOUSINGS

DOVETAILS ALLOW STACKING IN VERTICAL, HORIZONTAL, OR IN BLOCK CONFIGURATIONS.

WHEN MATED SIDE TO SIDE, HALF-ROUNDS ALIGN TO FORM A SLOT FOR ROLL PIN INSERTION (OPTIONAL).



BLOCKED CONNECTOR SPACING



CAT. NO.	COLOR
75LOKBLU	BLUE
75LOKBLK	BLACK
75LOKWHT	WHITE
75LOKGRN	GREEN
75LOKRED	RED

NOTES:

1. SPRING/HOUSING ASSEMBLIES ARE UL RECOGNIZED PER FILE E26226 AND CSA CERTIFIED PER LR25154.
2. THESE HOUSING ASSEMBLIES ACCOMODATE ANDERSON CONTACTS FOR WIRE RANGES FROM #12 AWG TO #6 AWG.
3. FOR ASSEMBLY INSTRUCTIONS, SEE DOCUMENT 1S1072.
4. HOUSINGS: POLYCARBONATE, UL94V0.  
SPRING: STAINLESS STEEL  
FOR OTHER COLORS, CONSULT ANDERSON POWER PRODUCTS

DIMENSIONS ARE IN:	INCH [MM]	<b>APPROVALS</b>		<b>ANDERSON POWER PRODUCTS</b>			
UNLESS OTHERWISE STATED		DRAWN	CMS	5/18/2001	<b>TITLE</b> PP75 LOCKING HOUSING		
TOLERANCES:		CHECKED	DJD	5/23/2001			
DECIMALS (INCH)	DECIMALS (MM)	ANGLES	MFG APPRV	UFN	5/25/2001	SIZE A	
.XX ± .02	.X ± .5	±2°	QC APPRV	CHB	5/25/2001		
SURFACE FINISH:			ENG APPRV	RPO	5/23/2001		DWG NO. 114321S1
MACHINED 128µin [3.2µ]			MATERIAL: SEE NOTES		SCALE NONE	CADFILE 01443	REV. 2
MOLDED 64µin [1.6µ]			FINISH: AS MOLDED		SHEET 1 OF 1		
		-CAD GENERATED DRAWING- DO NOT MANUALLY UPDATE DO NOT SCALE					

REV.	DESCRIPTION	APPRV	DATE
2	ECRN-15089 UPDATE	TWE	3/16/12
1	ECRN-14018 ADDED 75LOKRED	AF	5/25/06
REVISIONS			