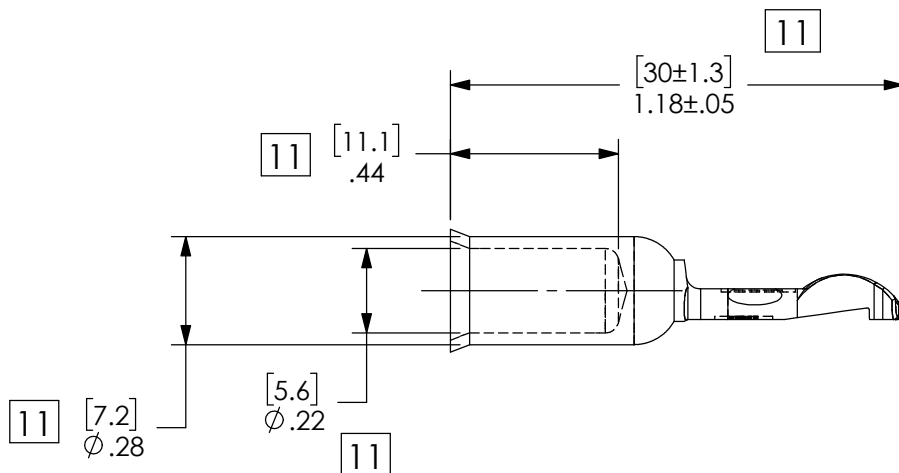
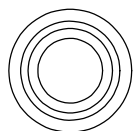
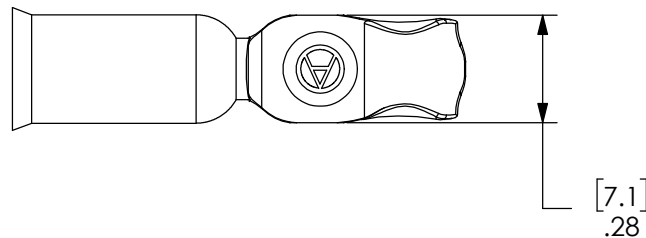
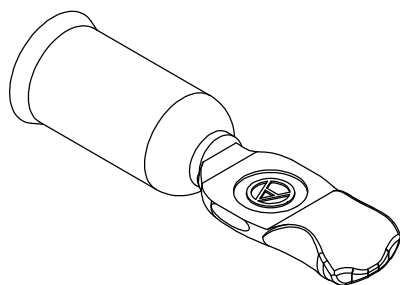


THE INFORMATION CONTAINED IN THIS DRAWING IS THE SOLE PROPERTY OF ANDERSON POWER PRODUCTS. ANY REPRODUCTION IN PART OR WHOLE WITHOUT THE WRITTEN PERMISSION OF ANDERSON POWER PRODUCTS IS PROHIBITED.

Copyright 2011

ANDERSON POWER PRODUCTS RESERVES THE RIGHT TO ALTER PRODUCT TYPES, THEIR TECHNICAL DATA, DIMENSION, STYLE AND ACCESSORIES WITHOUT PRIOR NOTIFICATION.



DIMENSIONS ARE IN:	INCH [MM]	APPROVALS		ANDERSON POWER PRODUCTS TITLE PP75/SB50 CONTACT FOR USE WITH #6 AWG MAX. LOW DETENT, CAT. NO. 1307
UNLESS OTHERWISE STATED		DRAWN		
TOLERANCES:		DJD	4/1/1970	
DECIMALS (INCH)	DECIMALS (MM)	ANGLES		
.XX ±.02	.X ±.5	±2°		
SURFACE FINISH:		CHECKED		
MACHINED	128µin [3.2µ]	JET	4/1/1970	
MOLDED	64µin [1.6µ]	MFG APPRV		
MATERIAL:		QC APPRV		
COPPER ALLOY		ENG APPRV		
FINISH:		LB	8/8/1973	SIZE A
SILVER PLATE				DWG NO. 1C0608S8
3rd ANGLE PROJECTION		-CAD GENERATED DRAWING- DO NOT MANUALLY UPDATE DO NOT SCALE		REV. 11
		SCALE	CADFILE	SHEET
		NONE	01038	1 OF 1

REV.	DESCRIPTION	APPRV	DATE
11	ECN 2016-0095	CPD	10/7/2016
10	ECRN 15005: FIXED CADFILE TYPO	JHN	10/31/2011
REVISIONS			