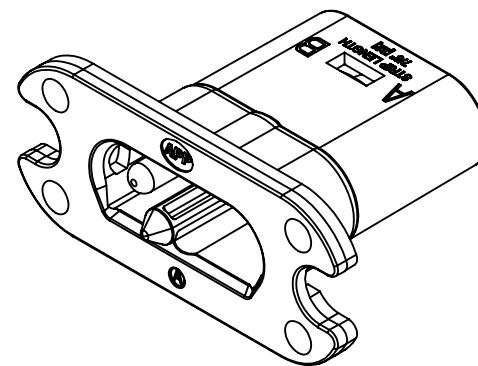
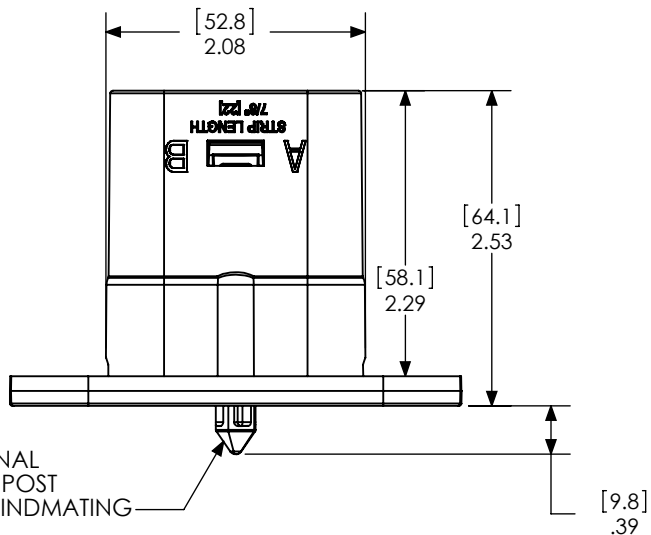


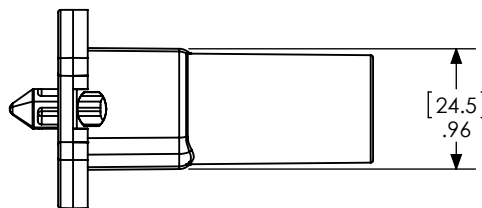
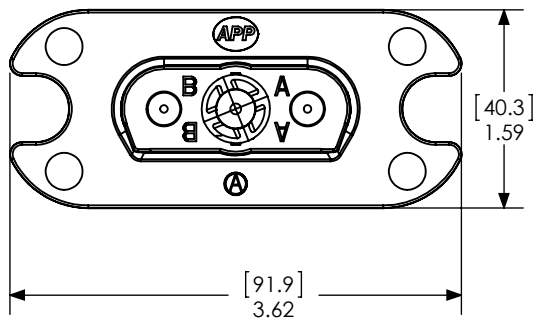
THE INFORMATION CONTAINED IN THIS DRAWING IS THE SOLE PROPERTY OF ANDERSON POWER PRODUCTS. ANY REPRODUCTION IN PART OR WHOLE WITHOUT THE WRITTEN PERMISSION OF ANDERSON POWER PRODUCTS IS PROHIBITED.

Copyright 2004

ANDERSON POWER PRODUCTS RESERVES THE RIGHT TO ALTER PRODUCT TYPES, THEIR TECHNICAL DATA, DIMENSION, STYLE AND ACCESSORIES WITHOUT PRIOR NOTIFICATION.



MALE CONNECTOR



NOTES:
 1. POWERMOD HP CRIMP CONTACTS AVAILABLE FOR:
 #2 AWG/35 SQ mm, 25 SQ mm, #4 AWG, 16 SQ mm,
 AND #6 AWG WIRE.
 2. MATERIALS:
 HOUSING MATERIAL: PBT
 CONTACTS: COPPER ALLOY, SILVER PLATE
 REFER TO THE DATA SHEET FOR COMPLETE SPECIFICATIONS.

DIMENSIONS ARE IN:	INCH[MM]	APPROVALS	
UNLESS OTHERWISE STATED		DRAWN	CMS 9/9/04
TOLERANCES:		CHECKED	DAM 12/7/04
DECIMALS (INCH)	DECIMALS (MM)	ANGLES	MFG APP
.XX ±.02	.X ±.5	±2°	CHB 12/7/04
SURFACE FINISH:		QC APP	JAR 12/7/04
MACHINED	128 [3.2] ✓	ENG APP	UFN 12/7/04
MOLDED	64 [1.6] ✓	MATERIAL: SEE NOTES	
FINISH: SEE NOTES		MATERIAL: SEE NOTES	

ANDERSON POWER PRODUCTS	
TITLE	
POWERMOD HP A SERIES DUAL POLE, PANEL MOUNT CONNECTORS	
SIZE	DWG NO.
A	114539S1
SCALE	REV.
NONE	0

3rd ANGLE PROJECTION

-CAD GENERATED DRAWING-
DO NOT MANUALLY UPDATE
DO NOT SCALE

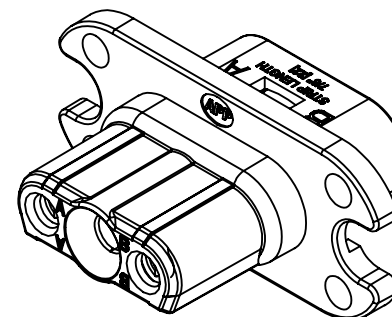
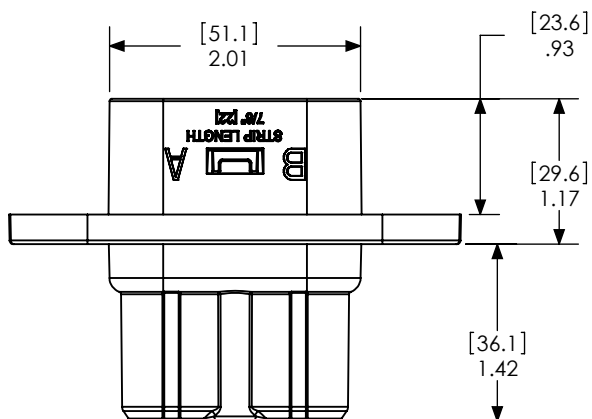
REV.	DESCRIPTION OF CHANGES	APPROVED	DATE

CADFILE	SHEET
02133	1 OF 3

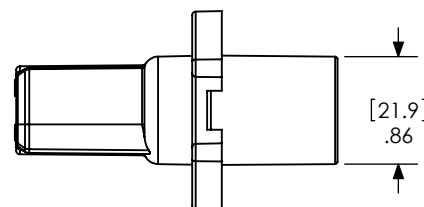
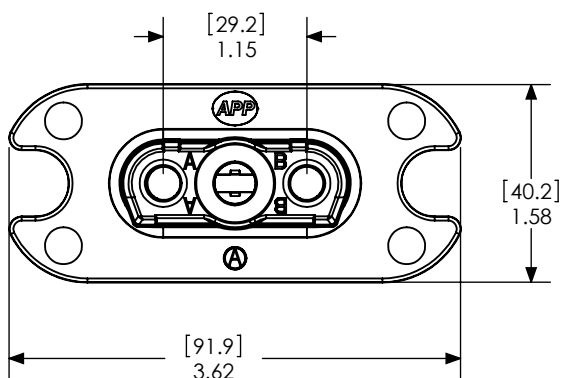
THE INFORMATION CONTAINED IN THIS DRAWING IS THE SOLE PROPERTY OF ANDERSON POWER PRODUCTS. ANY REPRODUCTION IN PART OR WHOLE WITHOUT THE WRITTEN PERMISSION OF ANDERSON POWER PRODUCTS IS PROHIBITED.

Copyright 2004

ANDERSON POWER PRODUCTS RESERVES THE RIGHT TO ALTER PRODUCT TYPES, THEIR TECHNICAL DATA, DIMENSION, STYLE AND ACCESSORIES WITHOUT PRIOR NOTIFICATION.



FEMALE CONNECTOR



- NOTES:
 1. POWERMOD HP CRIMP CONTACTS AVAILABLE FOR:
 #2 AWG/35 SQ mm, 25 SQ mm, #4 AWG, 16 SQ mm,
 AND #6 AWG WIRE.
 2. MATERIALS:
 HOUSING MATERIAL: PBT
 CONTACTS: COPPER ALLOY, SILVER PLATE
 REFER TO THE DATA SHEET FOR COMPLETE SPECIFICATIONS.

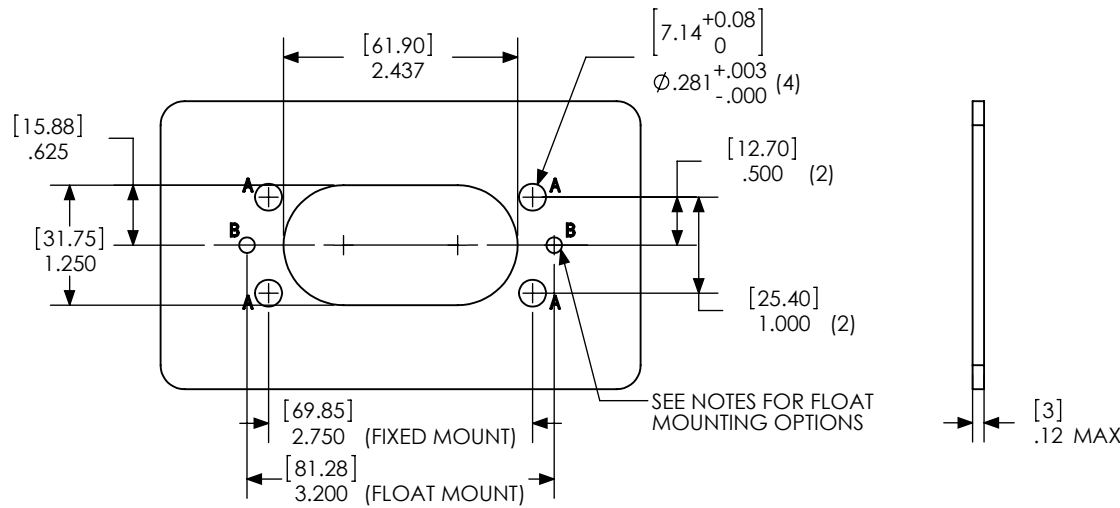
DIMENSIONS ARE IN:		INCH[MM]	APPROVALS		 ANDERSON POWER PRODUCTS		
UNLESS OTHERWISE STATED			DRAWN	CMS 9/9/04		TITLE POWERMOD HP A DUAL POLE, PANEL MOUNT CONNECTORS	
TOLERANCES:			CHECKED	DAM 12/7/04			
DECIMALS (INCH)	DECIMALS (MM)	ANGLES	MFG APP	CHB 12/7/04			
.XX ± .02	.X ± .5	± 2°	QC APP	JAR 12/7/04			
SURFACE FINISH:			ENG APP	UFN 12/7/04	SIZE	DWG NO.	REV.
MACHINED	128 [3.2]	✓			A	114539S1	0
MOLDED	64 [1.6]	✓			SCALE	CADFILE	SHEET
MATERIAL:	SEE NOTES				NONE	02133	2 OF 3
FINISH:	SEE NOTES						
 3rd ANGLE PROJECTION			-CAD GENERATED DRAWING- DO NOT MANUALLY UPDATE DO NOT SCALE				

*	*****	***	*****
REV.	DESCRIPTION OF CHANGES	APPROVED	DATE

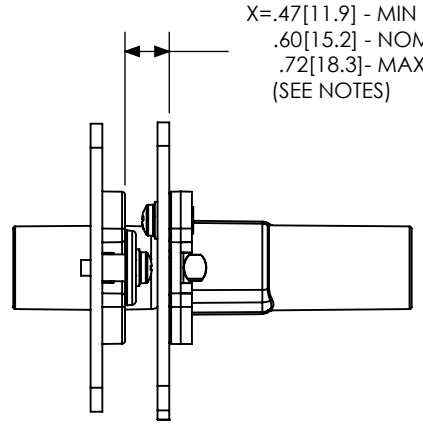
THE INFORMATION CONTAINED IN THIS DRAWING IS THE SOLE PROPERTY OF ANDERSON POWER PRODUCTS. ANY REPRODUCTION IN PART OR WHOLE WITHOUT THE WRITTEN PERMISSION OF ANDERSON POWER PRODUCTS IS PROHIBITED.

Copyright 2004

ANDERSON POWER PRODUCTS RESERVES THE RIGHT TO ALTER PRODUCT TYPES, THEIR TECHNICAL DATA, DIMENSION, STYLE AND ACCESSORIES WITHOUT PRIOR NOTIFICATION.



MATED GAP IN BLINDMATE PANEL CONFIGURATIONS



Mounting Options:
FIXED MOUNTING: Install (4) PEM no. S0-832-8 threaded standoffs (or equivalent $\phi .280$, .250 [6.35] long, threaded through) from side opposite connector's flange at locations marked "A". For Metric, use PEM no. S0-M4-6 or equivalent. Fixed mounting requires an area of the panel- 3.62 [92] wide by 1.59 [40.4] high
FLOAT MOUNTING:
 Option 1: Install (2) 8-32 or M4 captive studs from side opposite connector's flange at locations marked "B". Protruding length of stud must be at least .50 [12.7]. (For use with KEP nut with captive conical washer or APP shoulder washer (PMHPAFMH)
 Option 2: Install (2) 8-32 or M4 captive nuts from side opposite connector's flange at locations marked "B". (For use with SEMS screw with captive conical washer or APP shoulder washers (PMHPAFMH)
 Float mounting requires an area of panel 4.00 [101.6] by 1.85 [47] high

NOTES:
 1. IN PANEL TO PANEL APPLICATIONS, ONE GENDER MUST BE FIX MOUNTED AND THE OTHER MUST BE FLOAT MOUNTED.
 2. HOUSINGS CAN BE MOUNTED EITHER INTERNAL OR EXTERNAL TO THE PANEL
 3. MAXIMUM PANEL THICKNESS FOR FLOAT MOUNTING IS .12 [3.0]

DIMENSIONS ARE IN:		INCH[MM]	APPROVALS		 ANDERSON POWER PRODUCTS		
UNLESS OTHERWISE STATED			DRAWN	CMS 9/9/04		TITLE POWERMOD HP A SERIES DUAL POLE, PANEL MOUNT CONNECTORS	
TOLERANCES:			CHECKED	DAM 12/7/04			
DECIMALS (INCH)	DECIMALS (MM)	ANGLES	MFG APP	CHB 12/7/04			
.XX ± .02	.X ± .5	±2°	QC APP	JAR 12/7/04			
SURFACE FINISH:			ENG APP	UFN 12/7/04	SIZE	DWG NO.	REV.
MACHINED	128 [3.2]	✓			A/A4	114539S1	0
MOLDED	64 [1.6]	✓			SCALE	CADFILE	SHEET
MATERIAL: *****					NONE	02133	3 OF 3
FINISH: *****							
			-CAD GENERATED DRAWING- DO NOT MANUALLY UPDATE DO NOT SCALE				

REV.	DESCRIPTION OF CHANGES	APPROVED	DATE