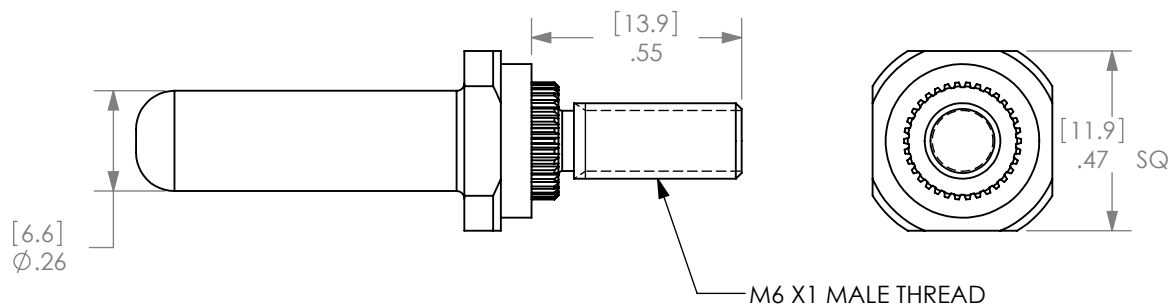


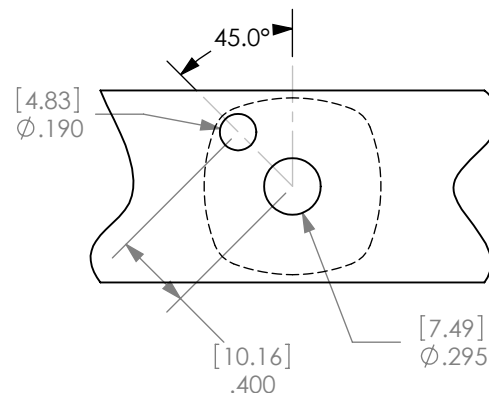
THE INFORMATION CONTAINED IN THIS DRAWING IS THE SOLE PROPERTY OF ANDERSON POWER PRODUCTS. ANY REPRODUCTION IN PART OR WHOLE WITHOUT THE WRITTEN PERMISSION OF ANDERSON POWER PRODUCTS IS PROHIBITED.

Copyright 2004

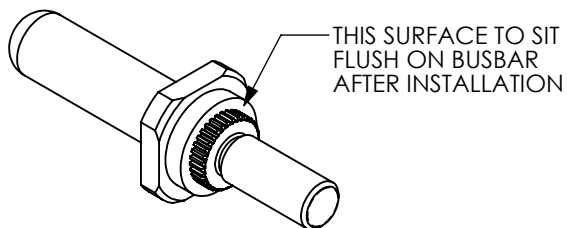
ANDERSON POWER PRODUCTS RESERVES THE RIGHT TO ALTER PRODUCT TYPES, THEIR TECHNICAL DATA, DIMENSION, STYLE AND ACCESSORIES WITHOUT PRIOR NOTIFICATION.



BUSBAR AND HOUSING MOUNTING HOLES



BUSBAR THICKNESS:
MIN- .12[3.0], MAX- .25[6.4]



NOTES:

1. MATERIAL:
COPPER ALLOY, SILVER PLATE
2. CONTACTS TO BE USED IN POWERMOD HPA BUSBAR HOUSINGS ONLY
3. CONTACTS TO BE SECURED TO BUSBAR WITH PROVIDED HARDWARE
4. TIGHTENING TORQUE = 31 IN-LBS [3.5N-M]

DIMENSIONS ARE IN:		INCH [MM]		<i>APPROVALS</i>		ANDERSON POWER PRODUCTS	
UNLESS OTHERWISE STATED				DRAWN	CMS	10/6/2004	TITLE PART NO. PMHPAP06 MALE BUSBAR CONTACT
TOLERANCES:				CHECKED	DJD	1/4/2005	
DECIMALS (INCH) DECIMALS (MM) ANGLES .XX ± .02 .X ± .5 ±2°				MFG APPRV	CHB	1/4/2005	
SURFACE FINISH:				QC APPRV	JA	1/4/2005	
MACHINED 128µin [3.2µ] MOLDED 64µin [1.6µ]				ENG APPRV	DAM	1/4/2005	SIZE A
MATERIAL: SEE NOTES						DWG NO.	114546S1
FINISH: SEE NOTES						REV.	2
				-CAD GENERATED DRAWING- DO NOT MANUALLY UPDATE DO NOT SCALE		SCALE	NONE
						CADFILE	02149
						SHEET	1 OF 1

REV.	DESCRIPTION	APPRV	DATE
2	ECRN-15777	CMS	2/17/2015
1	ECRN-14030 ADD PIN OD	CMS	6/1/06
REVISIONS			