

8

7

6

5

4

3

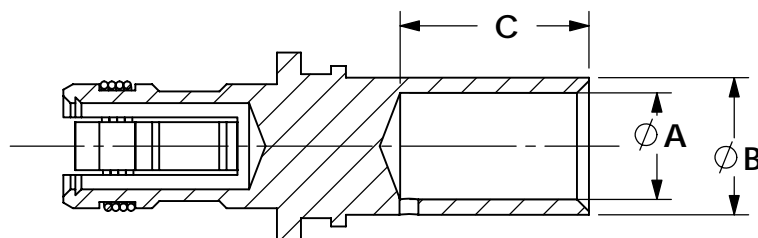
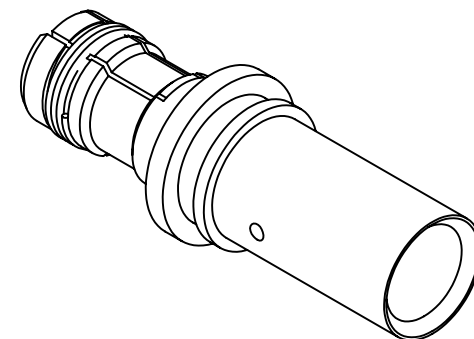
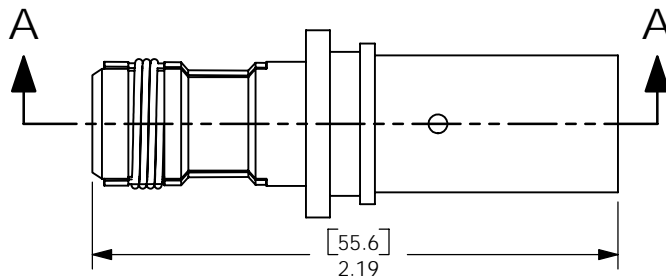
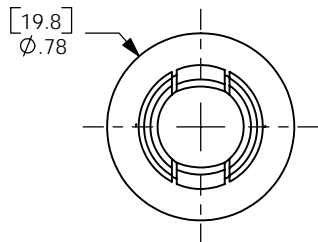
2

1

THE INFORMATION CONTAINED IN THIS DRAWING IS THE SOLE PROPERTY OF ANDERSON POWER PRODUCTS. ANY REPRODUCTION IN PART OR WHOLE WITHOUT THE WRITTEN PERMISSION OF ANDERSON POWER PRODUCTS IS PROHIBITED.

Copyright 2006

ANDERSON POWER PRODUCTS RESERVES THE RIGHT TO ALTER PRODUCT TYPES, THEIR TECHNICAL DATA, DIMENSION, STYLE AND ACCESSORIES WITHOUT PRIOR NOTIFICATION.



SECTION A-A

PART NO	WIRE SIZE	A		B		C	
		IN	mm	IN	mm	IN	mm
PMHPBS01	4/0	.64	16.2	.76	19.3	.98	25.0
PMHPBS02	95mm sq	.59	15.0	.78	19.8	.98	25.0
PMHPBS03	2/0-70mm sq	.51	13.0	.67	17.0	.79	20.0
PMHPBS04	1/0- 50mm sq	.44	11.3	.57	14.5	.79	20.0

NOTES:

- MATERIAL:
SOCKET BODY- COPPER ALLOY, SILVER PLATE
SPRING- STAINLESS STEEL
- CONTACTS TO BE USED IN POWERMOD HP B SERIES HOUSINGS ONLY
- CONTACTS MUST BE CRIMPED ONTO WIRE BEFORE ASSEMBLY INTO HOUSINGS
- REFER TO DATA SHEET FOR CRIMP TOOLING

DIMENSIONS ARE IN:	INCH[MM]	APPROVALS		 ANDERSON POWER PRODUCTS
UNLESS OTHERWISE STATED		DRAWN	CMS 6/2/06	
TOLERANCES:		CHECKED	DJD 6/8/06	
DECIMALS (INCH)	DECIMALS (MM)	ANGLES	MFG APP	
.XX ±.02	.X ±.5	±2°	CHB 6/7/06	
SURFACE FINISH:		QC APP	UFN 6/5/06	SIZE A/A4
MACHINED 128 [3.2] ✓		ENG APP	DAM 6/2/06	
MOLDED 64 [1.6] ✓		FINISH: SEE NOTES		REV. 0
MATERIAL: SEE NOTES		CAD GENERATED DRAWING- DO NOT MANUALLY UPDATE DO NOT SCALE		SCALE NONE
FINISH: SEE NOTES				CADFILE 02540
* ***** ** *****		SHEET 1 OF 1		

REV.	DESCRIPTION OF CHANGES	APPROVED	DATE

8

7

6

5

4

3

2

1