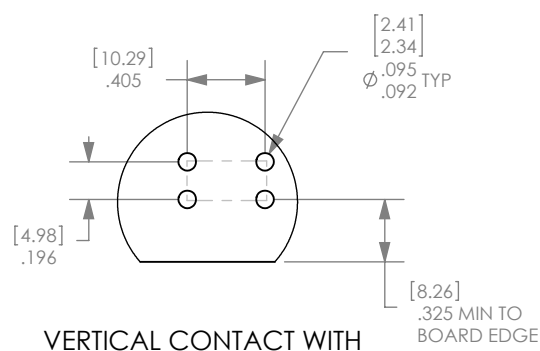


THE INFORMATION CONTAINED IN THIS DRAWING IS THE SOLE PROPERTY OF ANDERSON POWER PRODUCTS. ANY REPRODUCTION IN PART OR WHOLE WITHOUT THE WRITTEN PERMISSION OF ANDERSON POWER PRODUCTS IS PROHIBITED.

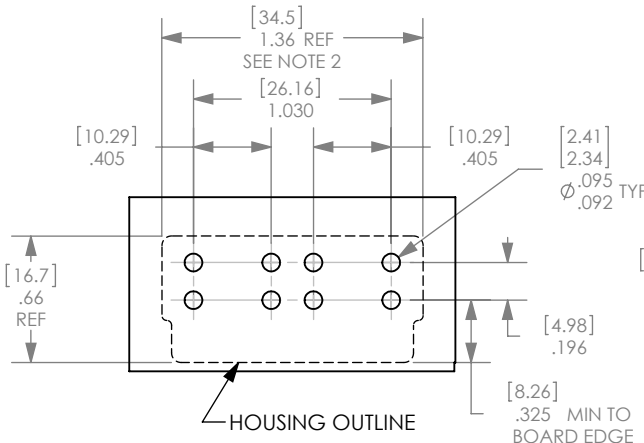
**Copyright 2012**

ANDERSON POWER PRODUCTS RESERVES THE RIGHT TO ALTER PRODUCT TYPES, THEIR TECHNICAL DATA, DIMENSION, STYLE AND ACCESSORIES WITHOUT PRIOR NOTIFICATION.

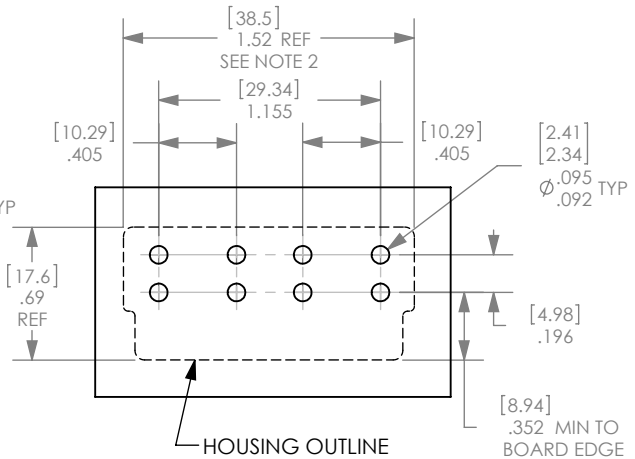
**PC BOARD HOLE LAYOUT**



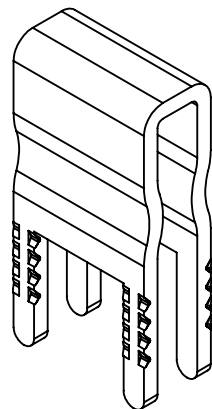
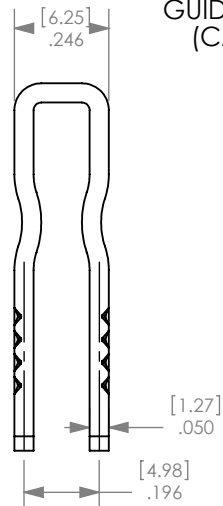
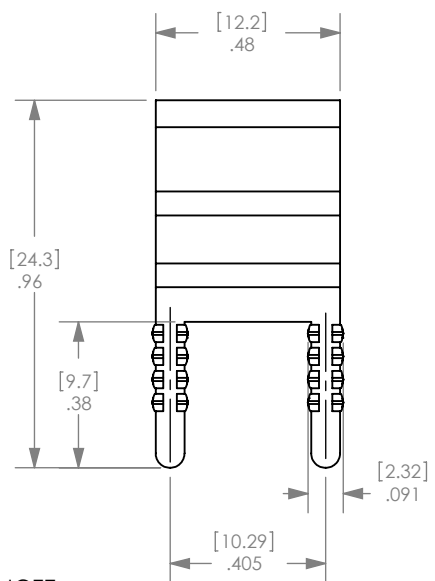
**VERTICAL CONTACT WITH SINGLE PP75 GUIDE HOUSING NOT REQUIRED**



**VERTICAL CONTACT WITH DOUBLE PP75'S GUIDE HOUSING REQUIRED (CAT. NO. PC-HSG-PP)**



**VERTICAL CONTACT WITH SB50 GUIDE HOUSING REQUIRED (CAT. NO. PC-HSG-SB)**



CAT. NO.	PLATING
PC5933T	TIN
PC5933S	SILVER

- NOTE:**
- HOLE DIMENSIONS FOR PCB LAYOUT BASED ON HOLE SIZE AFTER PLATING
  - DIMENSION SYMMETRIC ABOUT GUIDE HOUSING CENTERLINE

DIMENSIONS ARE IN:	INCH [MM]	<b>APPROVALS</b>		 <b>ANDERSON POWER PRODUCTS</b>
UNLESS OTHERWISE STATED		<b>DRAWN</b>	BL 8/20/2001	
TOLERANCES:		<b>CHECKED</b>	DJD 11/22/2002	
DECIMALS (INCH) DECIMALS (MM) ANGLES .XX ±.02 .X ±.5 ±2°		<b>MFG APPR</b>	DAM 11/22/2002	
SURFACE FINISH:		<b>QC APPR</b>	RPO 11/22/2002	<b>TITLE</b>  <b>MINI VERTICAL POWER CLAW</b>
MACHINED 128µin [3.2µ] MOLDED 64µin [1.6µ]		<b>ENG APPR</b>	MAW 11/22/2002	
<b>MATERIAL:</b> COPPER <b>FINISH:</b> SEE TABLE				
		-CAD GENERATED DRAWING- DO NOT MANUALLY UPDATE DO NOT SCALE		<b>SIZE</b> A <b>DWG NO.</b> 114332S1 <b>REV.</b> 2
<b>REVISIONS</b>		<b>SCALE</b>	NONE	<b>CADFILE</b> 01683 <b>SHEET</b> 1 OF 1

REV.	DESCRIPTION	APPRV	DATE
2	ECRN-15202 DIM & NOTE UPDATE	TWE	7/13/2012
1	ECRN-14247 ADD HOUSING OUTLINE	CMS	3/26/08