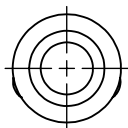
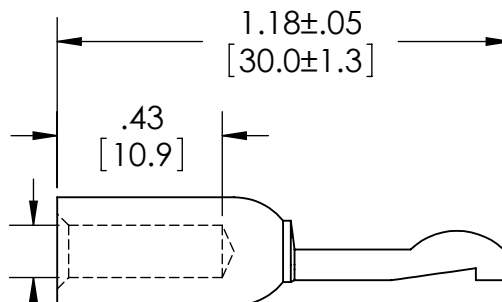
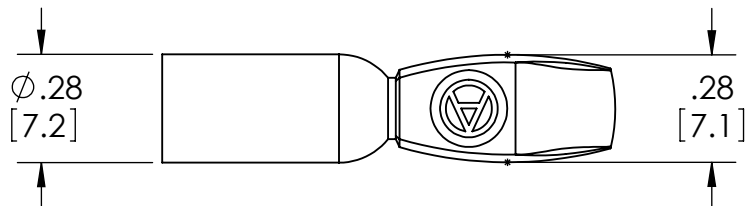
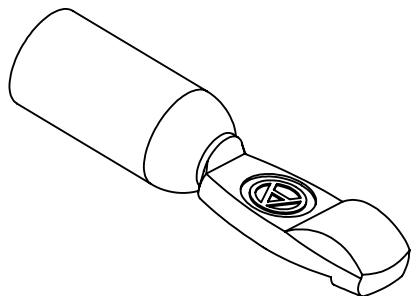


8 7 6 5 4 3 2 1

THE INFORMATION CONTAINED IN THIS DRAWING IS THE SOLE PROPERTY OF ANDERSON POWER PRODUCTS. ANY REPRODUCTION IN PART OR WHOLE WITHOUT THE WRITTEN PERMISSION OF ANDERSON POWER PRODUCTS IS PROHIBITED.

Copyright 2009

ANDERSON POWER PRODUCTS RESERVES THE RIGHT TO ALTER PRODUCT TYPES, THEIR TECHNICAL DATA, DIMENSION, STYLE AND ACCESSORIES WITHOUT PRIOR NOTIFICATION.



Ø.14 [3.5]

DIMENSIONS ARE IN:	INCH[MM]	APPROVALS	
UNLESS OTHERWISE STATED		DRAWN	DD 4/70
TOLERANCES:		CHECKED	JT 4/70
DECIMALS (INCH)	DECIMALS (MM)	ANGLES	
.XX ±.02	.X ±.5	±2°	
SURFACE FINISH:		MFG APP	LB 4/70
MACHINED	128 [3.2] ✓	QC APP	NH 12/05
MOLDED	64 [1.6] ✓	ENG APP	JT 4/70
MATERIAL: COPPER ALLOY		SIZE	A
FINISH: SILVER PLATE		DWG NO.	1C0608S31
		REV.	11



ANDERSON POWER PRODUCTS

TITLE
**OUTLINE
 PP75/SB50 CONTACT
 FOR #10-12 WIRE
 LOW DETENT**

11	ECRN 14452 REV. & REDRWN	LBF	06/17/09
REV.	DESCRIPTION OF CHANGES	APPROVED	DATE



CAD GENERATED DRAWING
 DO NOT MANUALLY UPDATE
 DO NOT SCALE

SCALE	CADFILE	SHEET
2:1	01847	1 OF 1

8 7 6 5 4 3 2 1