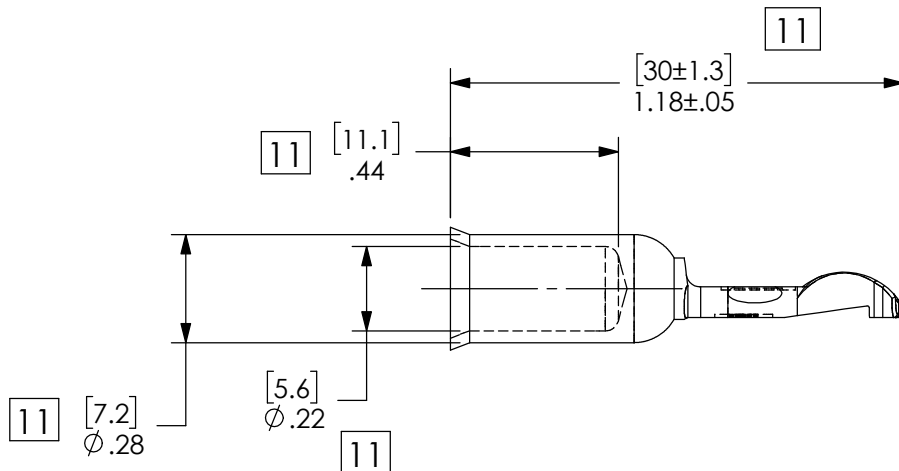
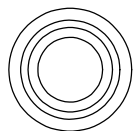
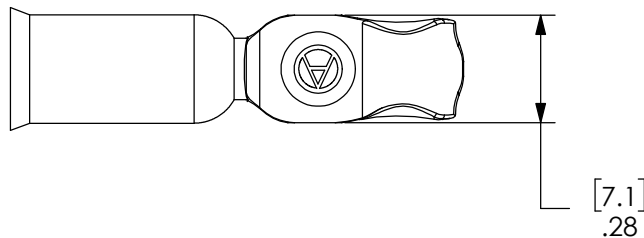
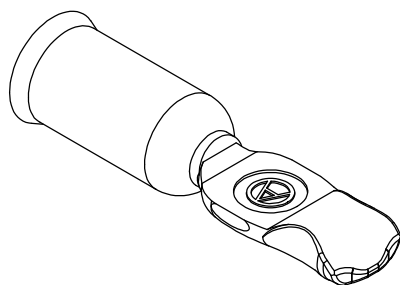


THE INFORMATION CONTAINED IN THIS DRAWING IS THE SOLE PROPERTY OF ANDERSON POWER PRODUCTS. ANY REPRODUCTION IN PART OR WHOLE WITHOUT THE WRITTEN PERMISSION OF ANDERSON POWER PRODUCTS IS PROHIBITED.

**Copyright 2011**

ANDERSON POWER PRODUCTS RESERVES THE RIGHT TO ALTER PRODUCT TYPES, THEIR TECHNICAL DATA, DIMENSION, STYLE AND ACCESSORIES WITHOUT PRIOR NOTIFICATION.



DIMENSIONS ARE IN:	INCH [MM]	<b>APPROVALS</b>		<b>ANDERSON POWER PRODUCTS</b> <b>TITLE</b> PP75/SB50 CONTACT FOR USE WITH #6 AWG MAX. LOW DETENT, CAT. NO. 1307
UNLESS OTHERWISE STATED		<b>DRAWN</b>		
TOLERANCES:		DJD	4/1/1970	
DECIMALS (INCH)	DECIMALS (MM)	<b>CHECKED</b>		
.XX ±.02	.X ±.5	JET	4/1/1970	
SURFACE FINISH:		<b>MFG APPRV</b>		
MACHINED	128µin [3.2µ]	<b>QC APPRV</b>		
MOLDED	64µin [1.6µ]			
<b>MATERIAL:</b>		<b>ENG APPRV</b>		
COPPER ALLOY		LB	8/8/1973	
<b>FINISH:</b>		<b>SIZE</b>	<b>DWG NO.</b>	
SILVER PLATE		A	1C0608S8	
		<b>SCALE</b>	<b>CADFILE</b>	
		NONE	01038	
		<b>REV.</b>	<b>SHEET</b>	
		11	1 OF 1	

REV.	DESCRIPTION	APPRV	DATE
11	ECN 2016-0095	CPD	10/7/2016
10	ECRN 15005: FIXED CADFILE TYPO	JHN	10/31/2011
REVISIONS			