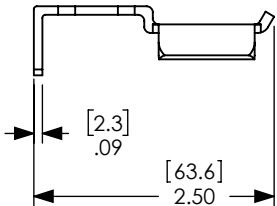
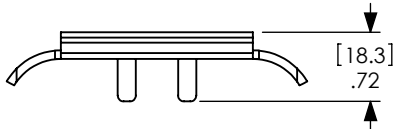
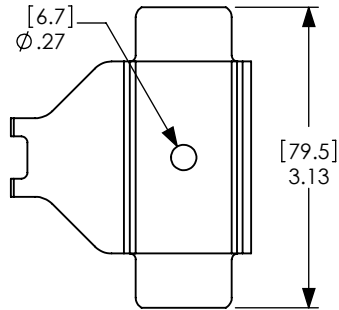
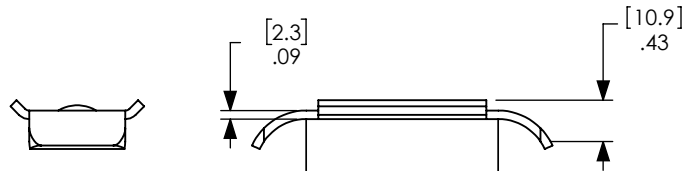
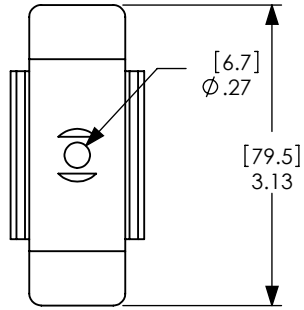


THE INFORMATION CONTAINED IN THIS DRAWING IS THE SOLE PROPERTY OF ANDERSON POWER PRODUCTS. ANY REPRODUCTION IN PART OR WHOLE WITHOUT THE WRITTEN PERMISSION OF ANDERSON POWER PRODUCTS IS PROHIBITED.

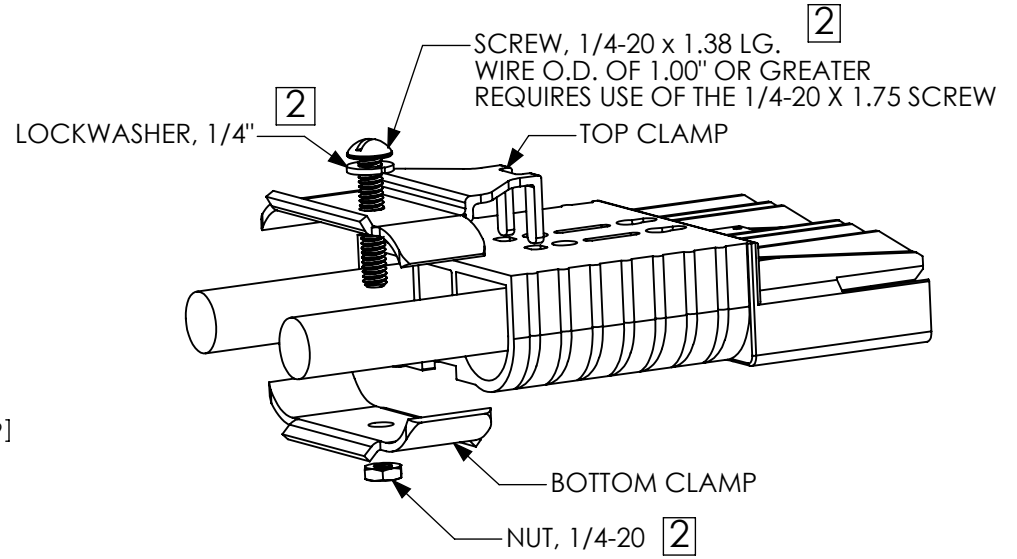
DATE	3/8/11	9/27/21
BY:	TWE	CPD
DESCRIPTION OF CHANGES	ECRN-14849 CLAMP THICKNESS DIM	ECN 2021-0084 - CLARIFIED HARDWARE USE
REV.	1	2



NOTES:

1. MATERIAL- COLD ROLLED STEEL, .089" THK; ZINC PLATE- YELLOW
2. HARDWARE KIT INCLUDES-ONE MACHINE SCREW, ONE NUT, ONE LOCK WASHER
3. CLAMP CAN BE USED IN CONJUNCTION WITH EITHER THE "A" FRAME HANDLE (995G2) OR THE MANUAL RELEASE BRACKETS (993G1 OR 994G1)
4. CONNECTOR SOLD SEPARATELY

NEXT ASSY	USED ON
APPLICATION	



EXPLODED VIEW OF CLAMP- BOTTOM SIDE

ITEM NO.	PART OR IDENTIFYING NO.	NOMENCLATURE OR DESCRIPTION	MATERIAL SPECIFICATION	QTY REQD
COPYRIGHT 2000 ANDERSON POWER PRODUCTS. ALL RIGHTS RESERVED. UNAUTHORIZED REPRODUCTION HEREBY PROHIBITED.				
DIMENSIONS ARE IN INCHES DIMENSIONS IN PARENTHESES [] ARE IN MILLIMETERS		CAD GENERATED DRAWING, DO NOT MANUALLY UPDATE		
TOLERANCES ARE: 2PL- ±.02 [±.5]		APPROVALS DATE		
MATERIALS: SEE NOTES		DRAWN CMS 4/24/00		
FINISH SEE NOTES		CHECKED DJD 5/8/00		
DO NOT SCALE DRAWING		RESP ENG UFN 5/15/00		
		MFG ENG CHB 5/10/00		
		QUAL ENG RPO 5/5/00		
		<b>ANDERSON POWER PRODUCTS</b> CATALOG NUMBER 911G2 CABLE CLAMP FOR SBE320/SBX350		
		SIZE SPECIFICATION: A 114243S1		REV. 2
		SCALE NONE	CADFILES/01215	SHEET 1 OF 1