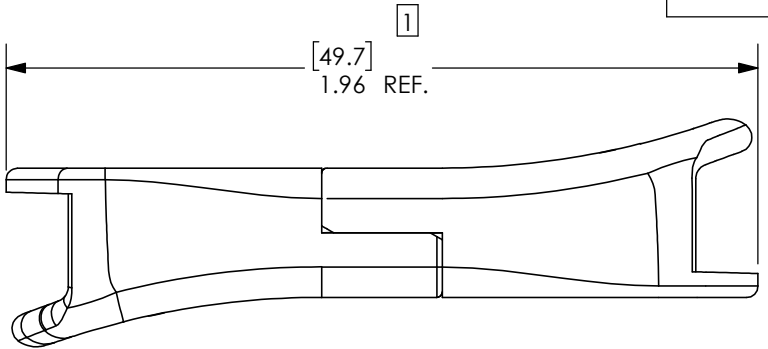
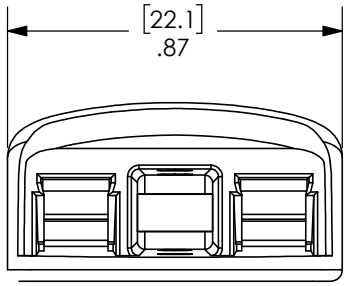
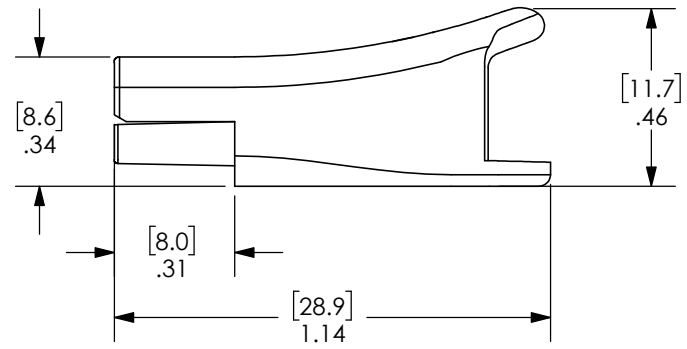
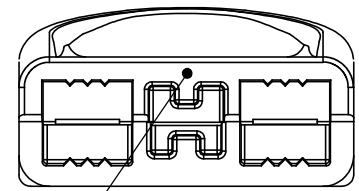
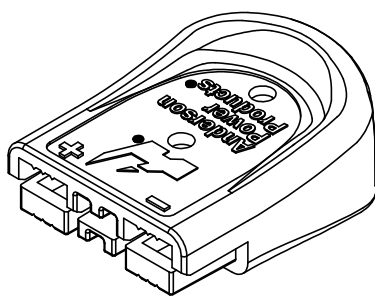
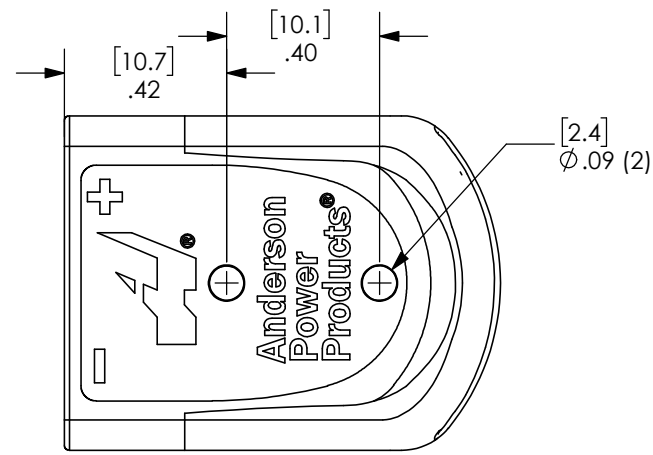
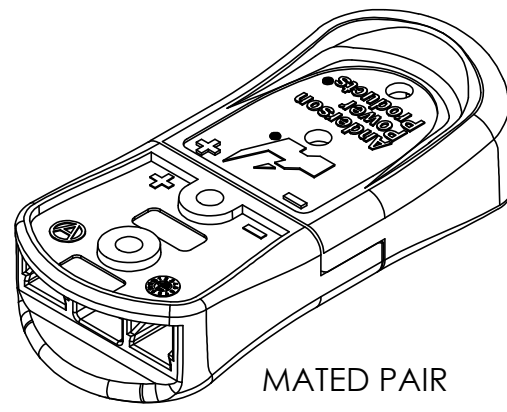


THE INFORMATION CONTAINED IN THIS DRAWING IS THE SOLE PROPERTY OF ANDERSON POWER PRODUCTS. ANY REPRODUCTION IN PART OR WHOLE WITHOUT THE WRITTEN PERMISSION OF ANDERSON POWER PRODUCTS IS PROHIBITED.

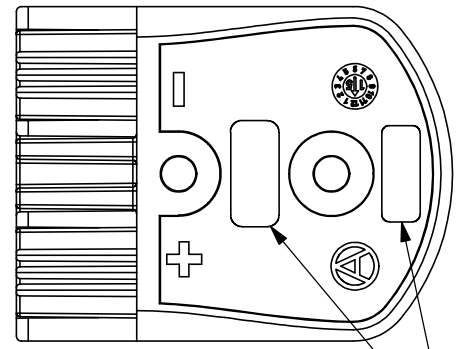
Copyright 2014

ANDERSON POWER PRODUCTS RESERVES THE RIGHT TO ALTER PRODUCT TYPES, THEIR TECHNICAL DATA, DIMENSION, STYLE AND ACCESSORIES WITHOUT PRIOR NOTIFICATION.



P/N	COLOR	KEY CONFIGURATION
B02265G1	RED	
B02265G2	BLACK	
B02265G3	BLUE	
B02265G4	GRAY	

B02265G1 SHOWN
SEE TABLE FOR ADDITIONAL KEYS



SEE NOTE 4 [1]

- NOTES:
- HOUSING MATERIAL: POLYCARBONATE
 - SPRING MATERIAL: STAINLESS STEEL
 - APP® ASSEMBLY TOOLING IS REQUIRED FOR UL, CSA & OTHER SAFETY AGENCY COMPLIANCE. USE OF UNAPPROVED TOOLING WILL VOID CONNECTOR WARRANTY.
 - MANUFACTURING AND AGENCY MARKINGS SHOWN ON THIS SURFACE.

REV.	DESCRIPTION	APPRV	DATE
1	ECN 2016-0112 - ADDED NOTE 4 REMOVED STAKING MARKS	CPD	12/9/2016
REVISIONS			

DIMENSIONS ARE IN:	INCH [MM]	APPROVALS	
UNLESS OTHERWISE STATED		DRAWN	
TOLERANCES:		AHR	4/28/2015
DECIMALS (INCH)	DECIMALS (MM)	CHECKED	
.XX ± .02	.X ± .5	RJL	4/28/2015
ANGLES		MFG APPRV	
±2°		LLD	4/28/2015
SURFACE FINISH:		QC APPRV	
MACHINED	128µin [3.2µ]	UFN	4/28/2015
MOLDED	64µin [1.6µ]	ENG APPRV	
MATERIAL:		CLY	4/28/2015
SEE NOTES			
FINISH:			
N/A			

ANDERSON POWER PRODUCTS

TITLE: **SBS MINI™ FINGERPROOF HOUSING**

SIZE: **B** DWG NO.: **B02201S3** REV.: **1**

SCALE: **NONE** CADFILE: **04502** SHEET: **1 OF 1**

-CAD GENERATED DRAWING-
DO NOT MANUALLY UPDATE
DO NOT SCALE

