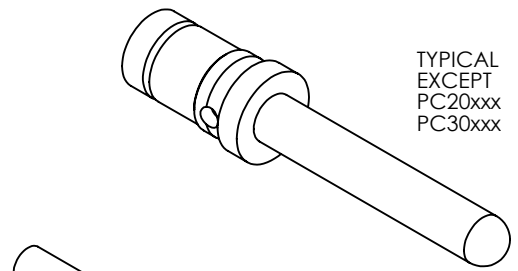


THE INFORMATION CONTAINED IN THIS DRAWING IS THE SOLE PROPERTY OF ANDERSON POWER PRODUCTS. ANY REPRODUCTION IN PART OR WHOLE WITHOUT THE WRITTEN PERMISSION OF ANDERSON POWER PRODUCTS IS PROHIBITED.

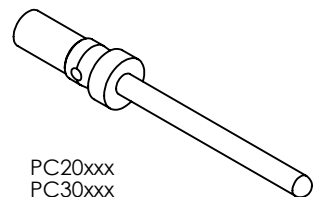
Copyright 2011

ANDERSON POWER PRODUCTS RESERVES THE RIGHT TO ALTER PRODUCT TYPES, THEIR TECHNICAL DATA, DIMENSION, STYLE AND ACCESSORIES WITHOUT PRIOR NOTIFICATION.

D

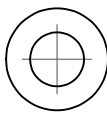
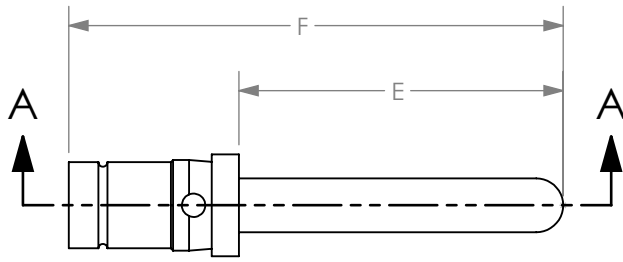


TYPICAL EXCEPT PC20xxx PC30xxx



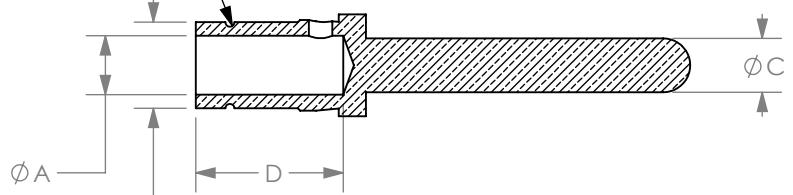
PC20xxx
PC30xxx

C



B

SEE NOTE 6



SECTION A-A

PART NO.	A	B	C	D	E	F	DESCRIPTION
	IN[MM]	IN[MM]	IN[MM]	IN[MM]	IN[MM]	IN[MM]	
*PC08SSN	.18[4.5]	.26[6.5]	.14[3.6]	.45[11.4]	.56[14.3]	1.11[28.2]	#8 AWG - STD. LENGTH
PC08FSN	.18[4.5]	.26[6.5]	.14[3.6]	.45[11.4]	.61[15.5]	1.16[29.4]	#8AWG PRE-MATE LENGTH
*PC12SSN	.10[2.6]	.15[3.8]	.09[2.4]	.26[6.5]	.56[14.3]	.86[21.8]	#12 AWG- STD. LENGTH
PC12FSN	.10[2.6]	.15[3.8]	.09[2.4]	.26[6.5]	.59[15.0]	.89[22.5]	#12 AWG- PRE-MATE LENGTH
PC12LSN	.10[2.6]	.15[3.8]	.09[2.4]	.26[6.5]	.52[13.2]	.81[20.7]	#12 AWG POST-MATE
*PC12SGH	.10[2.6]	.15[3.8]	.09[2.4]	.26[6.5]	.56[14.3]	.86[21.8]	#12 AWG- STD. LENGTH, HOT PLUG
PC12FGH	.10[2.6]	.15[3.8]	.09[2.4]	.26[6.5]	.59[15.0]	.89[22.5]	#12 AWG- PRE-MATE LENGTH, HOT PLUG
PC12LGH	.10[2.6]	.15[3.8]	.09[2.4]	.26[6.5]	.52[13.2]	.81[20.7]	#12 AWG POST-MATE, HOT PLUG
*PC16SSN	.07[1.7]	.10[2.6]	.06[1.6]	.27[6.8]	.45[11.5]	.75[19.0]	#16 AWG- STD. LENGTH
PC16FSN	.07[1.7]	.10[2.6]	.06[1.6]	.27[6.8]	.60[15.3]	.90[22.8]	#16 AWG- PRE-MATE LENGTH
PC16LSN	.07[1.7]	.10[2.6]	.06[1.6]	.27[6.8]	.41[10.5]	.71[18.0]	#16 AWG- POST MATE LENGTH
PC20SGN	.05[1.2]	.08[2.0]	.04[1.0]	.20[5.2]	.45[11.5]	.69[17.5]	#20 AWG- STD. LENGTH
PC20FGN	.05[1.2]	.08[2.0]	.04[1.0]	.20[5.2]	.60[15.3]	.84[21.3]	#20 AWG- PRE-MATE LENGTH
PC20LGN	.05[1.2]	.08[2.0]	.04[1.0]	.20[5.2]	.40[10.2]	.64[16.2]	#20 AWG POST-MATE
PC30SGN	.03[0.7]	.08[2.0]	.04[1.0]	.20[5.2]	.45[11.5]	.69[17.5]	#30 AWG STD. LENGTH
PC30FGN	.03[0.7]	.08[2.0]	.04[1.0]	.20[5.2]	.60[15.3]	.84[21.3]	#30 AWG PRE-MATE LENGTH
PC30LGN	.03[0.7]	.08[2.0]	.04[1.0]	.20[5.2]	.40[10.2]	.64[16.2]	#30 AWG POST-MATE

D

C

B

NOTES:

1. PC08 CONTACTS FOR USE IN 75 AMP POWER DRAWER ONLY
2. PC16 CONTACTS FOR USE IN 35 AMP POWER DRAWER ONLY
3. CRIMP CONTACTS ONTO WIRE PRIOR TO INSERTION INTO HOUSING
4. MATERIALS:
PIN BODY: PC08xxx, PC12xxx, PC16xxx - COPPER
PC30xxx, PC20xxx - BRASS
5. PLATING: PLATING IS SPECIFIED BY THE LAST TWO DIGITS OF THE PART NUMBER.
"SN" DENOTES SILVER OVER NICKEL
"GN" DENOTES GOLD OVER NICKEL
"GH" DENOTES GOLD OVER NICKEL AND HOT PLUGGABLE
6. CONTACTS WITH AN "*" HAVE AN EXTERNAL GROOVE ON THE CRIMP BARREL

A

REV.	DESCRIPTION	APPRV	DATE
10	ECRN-14975	TWE	9/21/11
9	ECRN-14955	TWE	8/3/11
8	ECRN-14780	TWE	11/29/10
7	ECRN-14779	TWE	11/24/10
6	ECRN-14199	CMS	5/5/07

REVISIONS

DIMENSIONS ARE IN:	INCH [MM]	APPROVALS		<p>ANDERSON POWER PRODUCTS</p> <p>TITLE</p> <p>PIN CRIMP CONTACTS FOR POWER DRAWER SERIES CONNECTORS</p>
UNLESS OTHERWISE STATED		DRAWN	6/13/2003	
TOLERANCES:		CHECKED	6/13/2003	
DECIMALS (INCH) DECIMALS (MM) ANGLES		MFG APPRV	7/8/2003	
2PL±.02[±.5]		DAM	7/8/2003	SIZE A DWG NO. 114446S1 REV. 10
MATERIAL: SEE NOTES		QC APPRV	7/8/2003	
FINISH: SEE NOTES		ENG APPRV	7/8/2003	SCALE 3:1 CADFILE 01772 SHEET 1 OF 1
		-CAD GENERATED DRAWING- DO NOT MANUALLY UPDATE DO NOT SCALE		