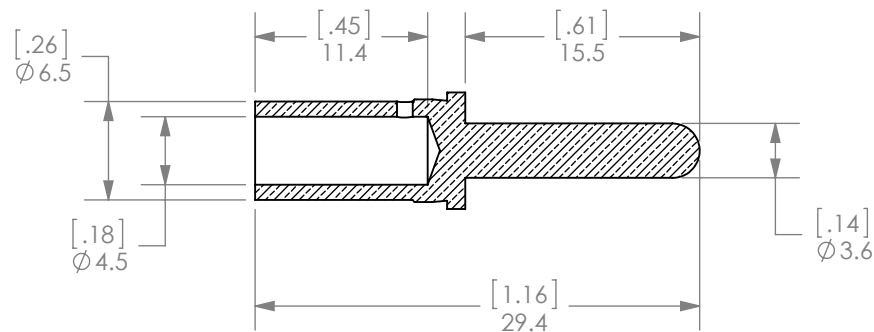
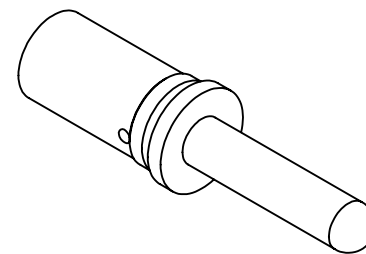
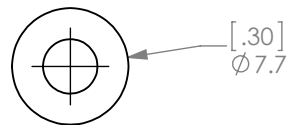
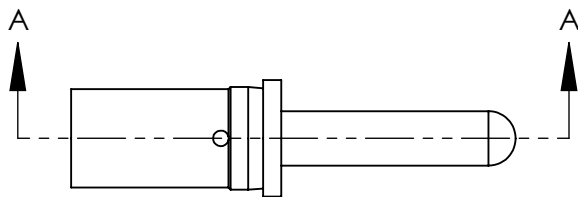


THE INFORMATION CONTAINED IN THIS DRAWING IS THE SOLE PROPERTY OF ANDERSON POWER PRODUCTS. ANY REPRODUCTION IN PART OR WHOLE WITHOUT THE WRITTEN PERMISSION OF ANDERSON POWER PRODUCTS IS PROHIBITED.

Copyright 2015

ANDERSON POWER PRODUCTS RESERVES THE RIGHT TO ALTER PRODUCT TYPES, THEIR TECHNICAL DATA, DIMENSION, STYLE AND ACCESSORIES WITHOUT PRIOR NOTIFICATION.



SECTION A-A

- NOTES:
 1. CONTACTS FOR USE IN 5 POSITION MID POWER SPEC PAK® ONLY
 2. CRIMP CONTACTS ONTO WIRE PRIOR TO INSERTION INTO HOUSING
 3. MATERIAL: COPPER
 4. PLATING: SILVER OVER NICKEL

DIMENSIONS ARE IN: MM [INCH]		APPROVALS		ANDERSON POWER PRODUCTS TITLE CAT. NO. PP08SGH: #8 PIN HOT PLUG/ GROUNDING CRIMP CONTACT
UNLESS OTHERWISE STATED		DRAWN	CMS 4/27/2015	
TOLERANCES:		CHECKED	JYL 4/28/2015	
DECIMALS (INCH)	DECIMALS (MM)	ANGLES		
.XX ± .02	.X ± .5	±2°		
SURFACE FINISH:		MFG APPRV	LLD 4/28/2015	
MACHINED 3.2µ [128µin]		QC APPRV	UFN 4/28/2015	
MOLDED 1.6µ [64µin]		ENG APPRV	CLY 4/28/2015	SIZE A
MATERIAL: SEE NOTES				DWG NO. 115436S2
FINISH: SEE NOTES				REV. 0
3rd ANGLE PROJECTION		-CAD GENERATED DRAWING- DO NOT MANUALLY UPDATE DO NOT SCALE		SCALE NONE
				CADFILE 04504
				SHEET 1 OF 1

REV.	DESCRIPTION	APPRV	DATE
REVISIONS			