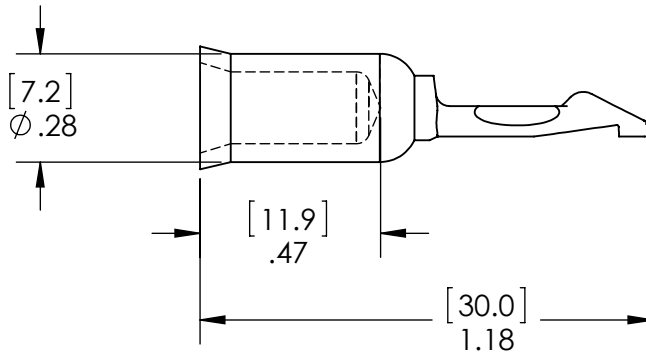
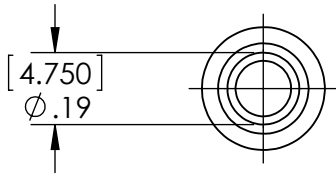
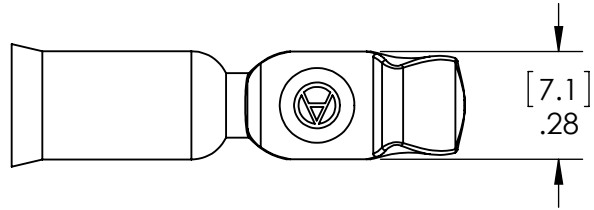


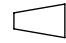


CAT. P/N: 5952



5	ECRN-15243	TWE	9/25/2012
4	ECRN-14452	CHB	6/17/09
3	ECRN-13652	CHB	12/03
2	ECRN-13635	CHB	11/11/03
REV.	DESCRIPTION	APPRV	DATE

REVISIONS

DIMENSIONS ARE IN:		INCH [MM]		APPROVALS		DATE		 ANDERSON POWER PRODUCTS			
UNLESS OTHERWISE STATED:				DRAWN	DMM		9/11/2003				
TOLERANCES:				CHECKED		DJD		11/1/2003			
DECIMALS (INCH)		DECIMALS (MM)		ANGLES				TITLE OUTLINE PP75/SB50 CONTACT FOR 10MM ² AND #8 WIRE HIGH DETENT			
.XX ± .02		.X ± .5		±2°							
SURFACE FINISH:				MFG APPRV		DSM				11/1/2003	
MACHINED		128µin [3.2µ]		QC APPRV		RPO				11/1/2003	
MOLDED		64µin [1.6µ]		ENG APPRV		UFN		11/1/2003			
MATERIAL:				SIZE		DWG. NO.		REV.			
COPPER ALLOY				A		114155S1		5			
FINISH:				SCALE		CAD FILE:		SHEET			
SILVER PLATE				NONE		03813		1 OF 1			
 3RD ANGLE PROJECTION				-CAD GENERATED DRAWING- DO NOT MANUALLY UPDATE DO NOT SCALE							