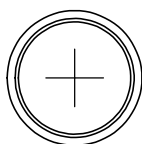
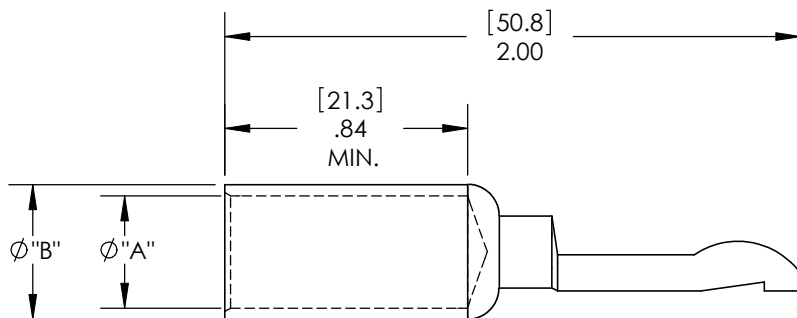
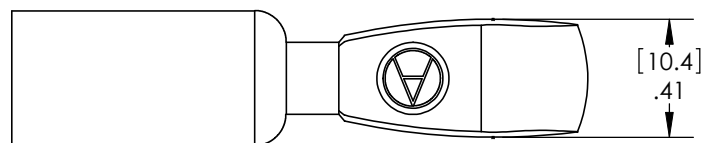
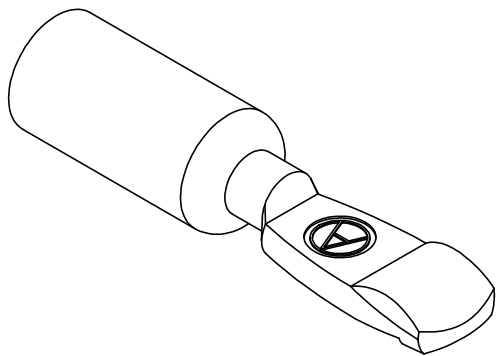


THE INFORMATION CONTAINED IN THIS DRAWING IS THE SOLE PROPERTY OF ANDERSON POWER PRODUCTS. ANY REPRODUCTION IN PART OR WHOLE WITHOUT THE WRITTEN PERMISSION OF ANDERSON POWER PRODUCTS IS PROHIBITED.

Copyright 2009

ANDERSON POWER PRODUCTS RESERVES THE RIGHT TO ALTER PRODUCT TYPES, THEIR TECHNICAL DATA, DIMENSION, STYLE AND ACCESSORIES WITHOUT PRIOR NOTIFICATION.

CAT. NO.	WIRE SIZE	"A"		"B"		FOR USE WITH
		IN	MM	IN	MM	
1323G1	#1 AWG	0.39	9.9	0.47	11.9	PP120 & SB120 HSGS
1323G2	#1/0 AWG	0.44	11.2	0.52	13.2	PP120 HSGS ONLY



DIMENSIONS ARE IN:	INCH[MM]	APPROVALS		 ANDERSON POWER PRODUCTS
UNLESS OTHERWISE STATED		DRAWN	AMS 04/10/09	
TOLERANCES:		CHECKED	DJD 04/13/09	TITLE
DECIMALS (INCH)	DECIMALS (MM)	ANGLES		PP/SB 120 CONTACTS
.XX ±.02	.X ±.5	±2°		FOR #1 & #1/0 AWG
SURFACE FINISH:		MFG APP	CHB 04/13/09	
MACHINED	128 [3.2]	QC APP	UFN 04/13/09	
MOLDED	64 [1.6]	ENG APP	DAM 04/10/09	
MATERIAL:		SIZE	A/A4	DWG NO.
COPPER ALLOY		SCALE	NONE	114856S1
FINISH:		REV.	0	
SILVER PLATE		CADFILE	02894	SHEET
			1 OF 1	

REV.	DESCRIPTION OF CHANGES	APPROVED	DATE
*	*****	***	*****



CAD GENERATED DRAWING  
DO NOT MANUALLY UPDATE  
DO NOT SCALE