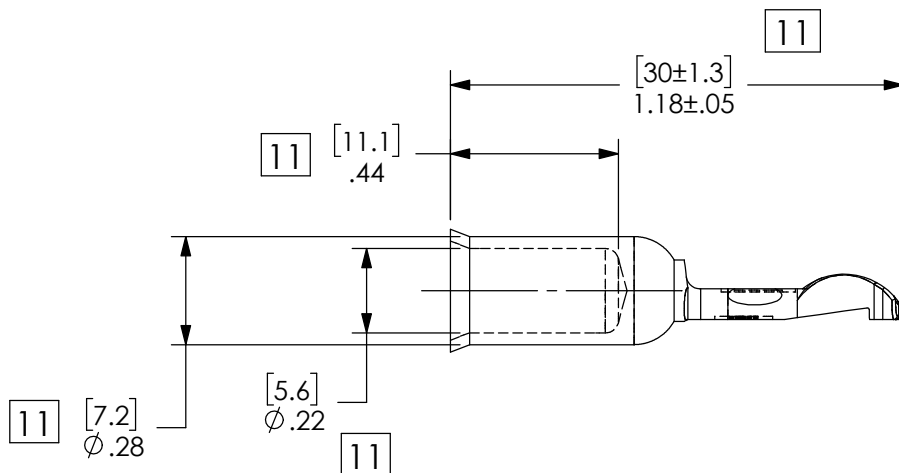
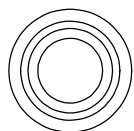
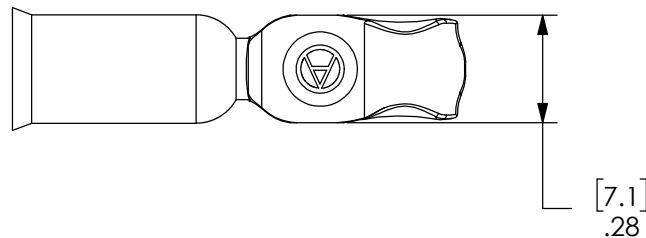
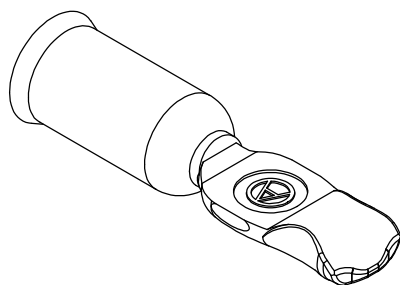


THE INFORMATION CONTAINED IN THIS DRAWING IS THE SOLE PROPERTY OF ANDERSON POWER PRODUCTS. ANY REPRODUCTION IN PART OR WHOLE WITHOUT THE WRITTEN PERMISSION OF ANDERSON POWER PRODUCTS IS PROHIBITED.

Copyright 2011

ANDERSON POWER PRODUCTS RESERVES THE RIGHT TO ALTER PRODUCT TYPES, THEIR TECHNICAL DATA, DIMENSION, STYLE AND ACCESSORIES WITHOUT PRIOR NOTIFICATION.



DIMENSIONS ARE IN:	INCH [MM]	APPROVALS			ANDERSON POWER PRODUCTS		
UNLESS OTHERWISE STATED		DRAWN			TITLE PP75/SB50 CONTACT FOR USE WITH #6 AWG MAX. LOW DETENT, CAT. NO. 1307		
TOLERANCES:		DJD	4/1/2010	SIZE A			
DECIMALS (INCH)	DECIMALS (MM)	CHECKED					DWG NO. 1C0608S8
.XX ±.02	.X ±.5	JET	4/1/2010	REV. 11			
SURFACE FINISH:		MFG APPRV					SCALE NONE
MACHINED	128µin [3.2µ]	QC APPRV		CADFILE 01038			
MOLDED	64µin [1.6µ]	ENG APPRV					SHEET 1 OF 1
MATERIAL:		LB	8/8/1973	DO NOT MANUALLY UPDATE DO NOT SCALE			
COPPER ALLOY							
FINISH:							
SILVER PLATE							

REV.	DESCRIPTION	APPRV	DATE
11	ECN 2016-0095	CPD	10/7/2016
10	ECRN 15005: FIXED CADFILE TYPO	JHN	10/31/2011

REVISIONS