

THE INFORMATION CONTAINED IN THIS DRAWING IS THE SOLE PROPERTY OF ANDERSON POWER PRODUCTS. ANY REPRODUCTION IN PART OR WHOLE WITHOUT THE WRITTEN PERMISSION OF ANDERSON POWER PRODUCTS IS PROHIBITED.

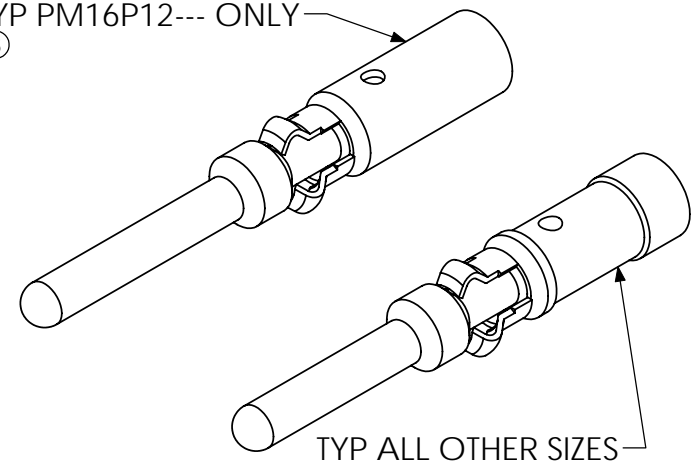
Copyright 2006

ANDERSON POWER PRODUCTS RESERVES THE RIGHT TO ALTER PRODUCT TYPES, THEIR TECHNICAL DATA, DIMENSION, STYLE AND ACCESSORIES WITHOUT PRIOR NOTIFICATION.

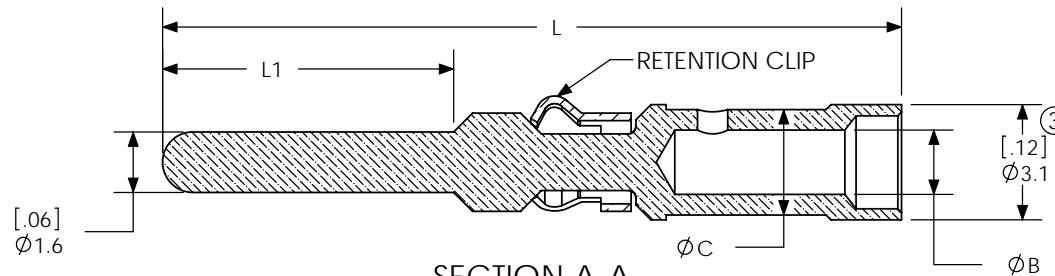
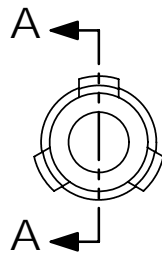
| PART NO.     | AWG      | DIA B |     | DIA C |     | L1  |     | L- REF |     |
|--------------|----------|-------|-----|-------|-----|-----|-----|--------|-----|
|              |          | mm    | IN  | mm    | IN  | mm  | IN  | mm     | IN  |
| PM16P2024S30 | 20/22/24 | 1.1   | .04 | 2.0   | .08 | 7.7 | .30 | 19.6   | .77 |
| PM16P1620S30 | 16/18/20 | 1.7   | .07 | 2.8   | .11 | 7.7 | .30 | 19.6   | .77 |
| PM16P1416S30 | 14/16    | 2.1   | .08 | 2.8   | .11 | 7.7 | .30 | 19.6   | .77 |
| PM16P12S30   | 12       | 2.6   | .10 | N/A   | N/A | 7.7 | .30 | 19.6   | .77 |
| PM16P2024A30 | 20/22/24 | 1.1   | .04 | 2.0   | .08 | 9.3 | .37 | 21.2   | .83 |
| PM16P1620A30 | 16/18/20 | 1.7   | .07 | 2.8   | .11 | 9.3 | .37 | 21.2   | .83 |
| PM16P1416A30 | 14/16    | 2.1   | .08 | 2.8   | .11 | 9.3 | .37 | 21.2   | .83 |
| PM16P12A30   | 12       | 2.6   | .10 | N/A   | N/A | 9.3 | .37 | 21.2   | .83 |
| PM16P2024B30 | 20/22/24 | 1.1   | .04 | 2.0   | .08 | 8.5 | .33 | 20.4   | .80 |
| PM16P1620B30 | 16/18/20 | 1.7   | .07 | 2.8   | .11 | 8.5 | .33 | 20.4   | .80 |
| PM16P1416B30 | 14/16    | 2.1   | .08 | 2.8   | .11 | 8.5 | .33 | 20.4   | .80 |
| PM16P12B30   | 12       | 2.6   | .10 | N/A   | N/A | 8.5 | .33 | 20.4   | .80 |
| PM16P2024C30 | 20/22/24 | 1.1   | .04 | 2.0   | .08 | 6.4 | .25 | 18.3   | .72 |
| PM16P1620C30 | 16/18/20 | 1.7   | .07 | 2.8   | .11 | 6.4 | .25 | 18.3   | .72 |
| PM16P1416C30 | 14/16    | 2.1   | .08 | 2.8   | .11 | 6.4 | .25 | 18.3   | .72 |
| PM16P12C30   | 12       | 2.6   | .10 | N/A   | N/A | 6.4 | .25 | 18.3   | .72 |

TYP PM16P12--- ONLY

③



TYP ALL OTHER SIZES



SECTION A-A

NOTES:

- MATERIAL:  
CONTACT BODY: BRASS  
RETENTION CLIP: STAINLESS STEEL
- FINISH:  
GOLD OVER NICKEL (LEAD FREE)
- CRIMP CONTACT ONTO WIRE BEFORE INSERTING INTO HOUSING

| DIMENSIONS ARE IN:      |               | MM[INCH] | APPROVALS   |      | ANDERSON POWER PRODUCTS |
|-------------------------|---------------|----------|---|------|-------------------------|
| UNLESS OTHERWISE STATED |               |          | DRAWN   | CMS  |                         |
| TOLERANCES:             |               |          | CHECKED   | DJD  | 1/25/06                 |
| DECIMALS (INCH)         | DECIMALS (MM) | ANGLES   | MFG APP   | CHB  | 1/25/06                 |
| .XX ± .02               | .X ± .5       | ±2°      | QC APP  | JA   | 1/25/06                 |
| SURFACE FINISH:         |               |          | ENG APP   | DAM  | 1/25/06                 |
| ISO 1302 ✓              |               |          | SIZE  | A/A4 | DWG NO. 114645S1        |
| MATERIAL: SEE NOTES     |               |          | REV.  | 3    |                         |
| FINISH: SEE NOTES       |               |          | SCALE   | NONE | CADFILE 02498           |
| 3rd ANGLE PROJECTION    |               |          | CAD GENERATED DRAWING. DO NOT MANUALLY UPDATE. DO NOT SCALE |      | SHEET 1 OF 1            |

| REV. | DESCRIPTION OF CHANGES                         | APPROVED | DATE    |
|------|--|----------|---------|
| 3    | ECRN 14485: ADD Ø3.1, ADD ISO VIEW #12 CONTACT | CMS      | 9/11/09 |
| 2    | ECRN 14034                                     | CMS      | 6/19/06 |
| 1    | ECRN 13959                                     | CMS      | 1/30/06 |