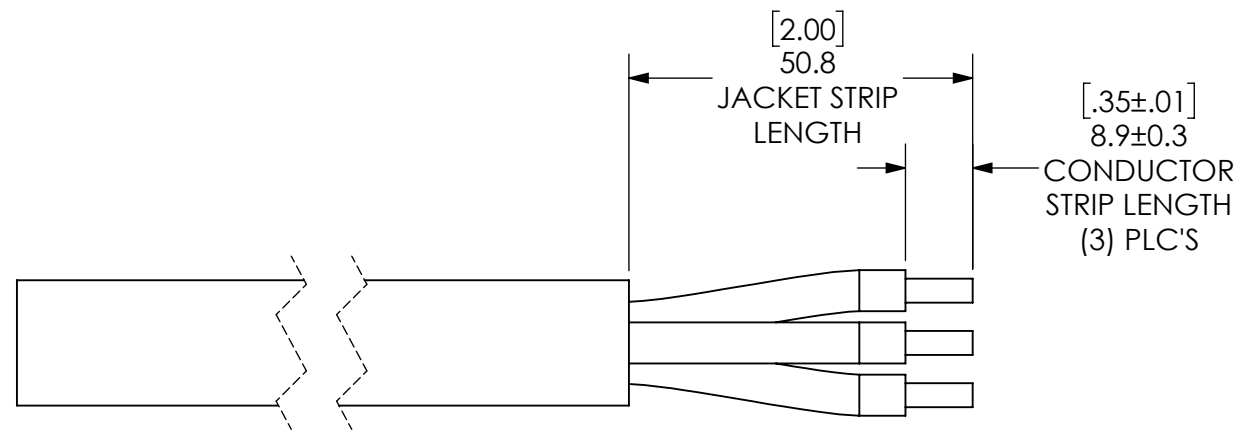


THE INFORMATION CONTAINED IN THIS DRAWING IS THE SOLE PROPERTY OF ANDERSON POWER PRODUCTS. ANY REPRODUCTION IN PART OR WHOLE WITHOUT THE WRITTEN PERMISSION OF ANDERSON POWER PRODUCTS IS PROHIBITED.

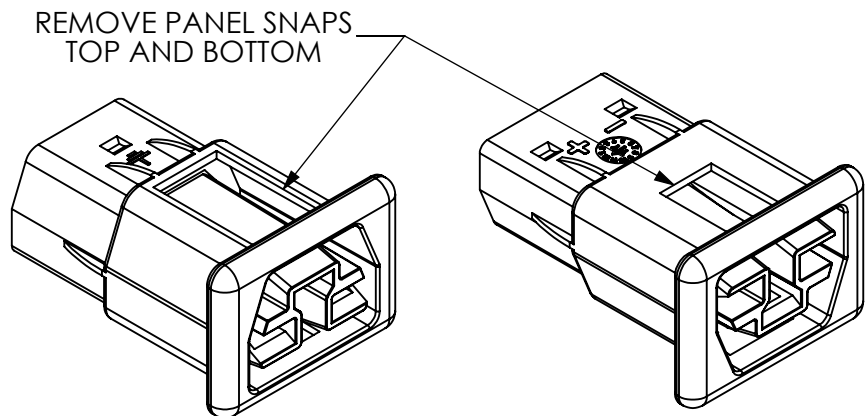
Copyright 2016

ANDERSON POWER PRODUCTS RESERVES THE RIGHT TO ALTER PRODUCT TYPES, THEIR TECHNICAL DATA, DIMENSION, STYLE AND ACCESSORIES WITHOUT PRIOR NOTIFICATION.

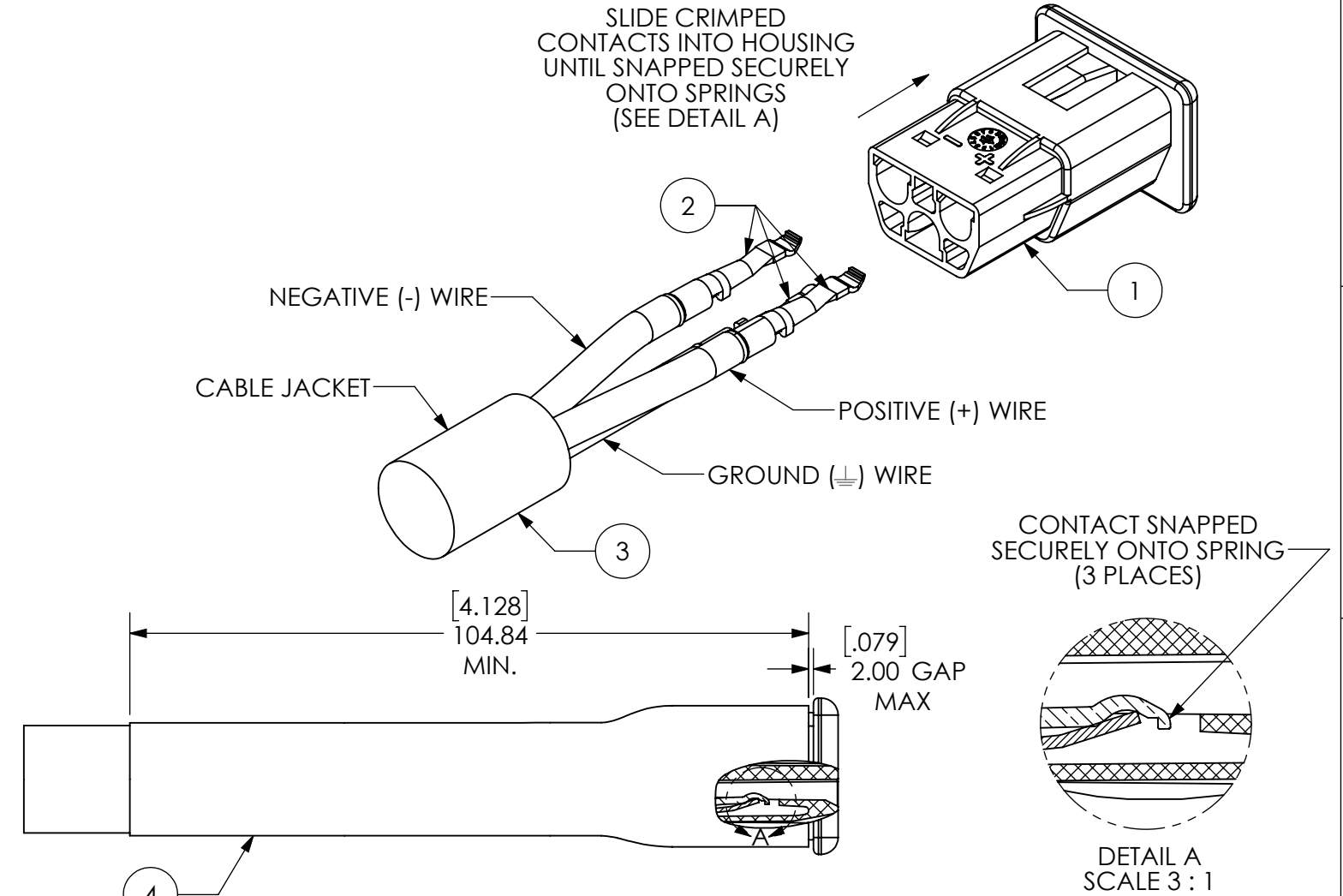
ITEM NO.	PART NUMBER	DESCRIPTION	Extension cord/QTY.
1	2002G3-GRY-BK	SAF-D-GRID STD. RECEPT, 1.0MM PANEL, GRAY	1
2	2003G1-LPBK	SAF-D-GRID RECEPTACLE TERMINAL, 10AWG	3
3	12 AWG ST	12 AWG ST BLACK PVC JACKET 3/C 90°MIN	1
4	H6000P45	HEAT SHRINK TUBE, 1.0" ID, ADHESIVE LINED	1



CABLE PREPARATION (RECEPTACLE END)



CONNECTOR PREPARATION



NOTES:

- POWER AND GROUND CONTACTS HAVE OPPOSITE ORIENTATION
- RECEPTACLE ASSEMBLY INSTRUCTIONS:
  - PREPARE CABLE AND CONNECTOR AS SHOWN ON SHEET 1.
  - CRIMP CONTACTS, ITEM 2, PER 1S6613 IN ORIENTATION SHOWN.
  - SLIDE SHRINK TUBING ONTO CABLE
  - INSERT CONTACTS INTO HOUSING MAKING SURE THAT THE CONTACTS ARE SECURELY SNAPPED ONTO SPRING AS SHOWN IN DETAIL A.
  - SLIDE SHRINK TUBING, ITEM 4, INTO PLACE AS SHOWN AND APPLY HEAT TO SHRINK ONTO CABLE AND CONNECTOR.

REV.	DESCRIPTION	APPRV	DATE
1	ECN 2016-0042 - CORRECT BOM AND P/N	AHR	6/13/16

REVISIONS

DIMENSIONS ARE IN:		MM [INCH]		APPROVALS		ANDERSON POWER PRODUCTS			
UNLESS OTHERWISE STATED				DRAWN	AHR	3/16/2016	TITLE		
TOLERANCES:				CHECKED	CDC	3/17/2016	SAF-D-GRID® IN-LINE RECEPTACLE/PLUG 12 AWG ST CABLE ASSEMBLY		
DECIMALS (INCH)	DECIMALS (MM)	ANGLES		MFG APPRV	CHB	3/22/2016	SIZE	DWG NO.	REV.
.XX ± .015	.X ± .38	±.5°		QC APPRV	UFN	3/21/2016	B	B02352G	1
.XXX ± .005	.XX ± .13			ENG APPRV	CLY	3/16/2016	SCALE	CADFILE	SHEET
SURFACE FINISH:				-CAD GENERATED DRAWING- DO NOT MANUALLY UPDATE DO NOT SCALE		1:1		04720	1 OF 2
MACHINED 3.2μ [128μin] ✓									
MOLDED 1.6μ [64μin] ✓									
MATERIAL: SEE NOTES									
FINISH: SEE NOTES									

E

D

C

B

A

E

D

C

B

A

8

7

6

5

4

3

2

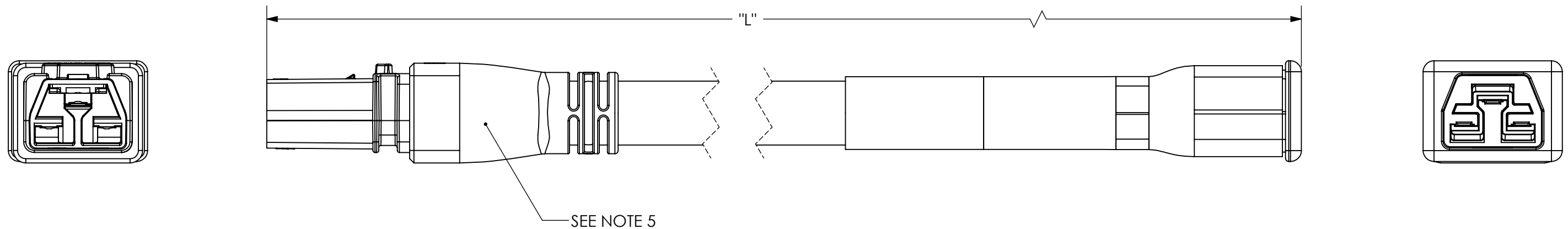
1

THE INFORMATION CONTAINED IN THIS DRAWING IS THE SOLE PROPERTY OF ANDERSON POWER PRODUCTS. ANY REPRODUCTION IN PART OR WHOLE WITHOUT THE WRITTEN PERMISSION OF ANDERSON POWER PRODUCTS IS PROHIBITED.

Copyright 2016

ANDERSON POWER PRODUCTS RESERVES THE RIGHT TO ALTER PRODUCT TYPES, THEIR TECHNICAL DATA, DIMENSION, STYLE AND ACCESSORIES WITHOUT PRIOR NOTIFICATION.

PART NUMBERS	CONSTRUCTION	FINISHED LENGTH "L" (SEE NOTE 4)		PACKAGE QUANTITY (PCS/BOX)	WIRE SIZE AWG	WIRE COLOR		
		M	FT			POSITIVE (+)	NEGATIVE (-)	GROUND
2035KR2	DOUBLE-ENDED INLINE	2.00	6.56	15	12	WHITE	BLACK	GREEN
2035KR3	DOUBLE-ENDED INLINE	3.00	9.84	10				
2035KR6	DOUBLE-ENDED INLINE	6.00	19.69	7				



NOTES:

- 3. CABLE TYPE: 3-CONDUCTOR,ST BLACK PVC JACKET. UL RATED 600V/90° MIN
- 4. LENGTH "L" TOLERANCE =  $+0.10L$   
 $-0.00$
- 5. PLUG ASSEMBLY INSTRUCTIONS  
1. ASSEMBLY PLUG PER DRAWING# B02072G.
- 6. ASSEMBLY TO BE 100% CHECKED FOR CONTINUITY, POLARITY AND DIELECTRIC WITHSTAND VOLTAGE AT 1,500 VAC FOR 15 SECONDS.

DIMENSIONS ARE IN:	MM [INCH]	APPROVALS		 ANDERSON POWER PRODUCTS	
UNLESS OTHERWISE STATED		DRAWN	AHR		3/16/2016
TOLERANCES:		CHECKED	CDC	3/17/2016	
DECIMALS (INCH)	DECIMALS (MM)	ANGLES	MFG APPRV	CHB	3/22/2016
.XX ± .015	.X ± .38	±.5°	QC APPRV	UFN	3/21/2016
.XXX ± .005	.XX ± .13		ENG APPRV	CLY	3/16/2016
SURFACE FINISH:					
MACHINED	3.2μ [128μin]				
MOLDED	1.6μ [64μin]				
MATERIAL: SEE NOTES		SIZE	DWG NO.	REV.	
FINISH: SEE NOTES		B	B02352G	1	
3rd ANGLE PROJECTION		SCALE	CADFILE	SHEET	
		1:1	04720	2 OF 2	