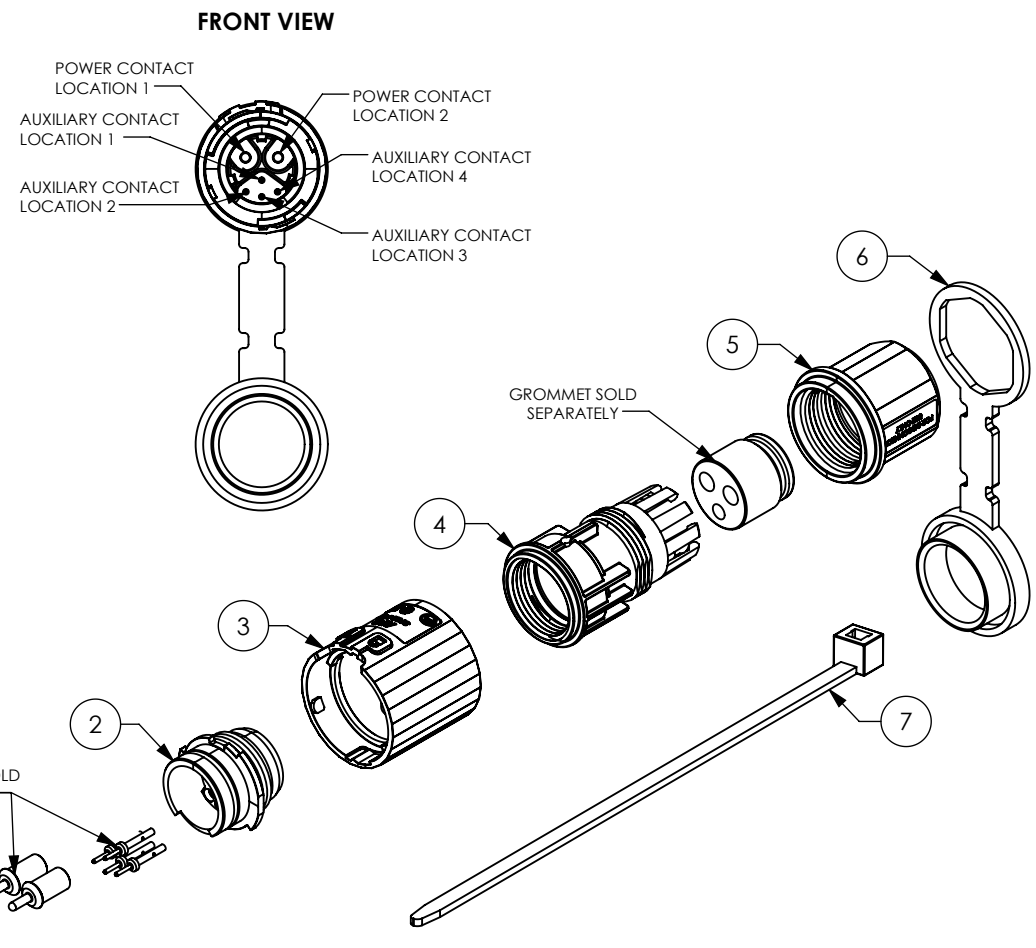


THE INFORMATION CONTAINED IN THIS DRAWING IS THE SOLE PROPERTY OF ANDERSON POWER PRODUCTS. ANY REPRODUCTION IN PART OR WHOLE WITHOUT THE WRITTEN PERMISSION OF ANDERSON POWER PRODUCTS IS PROHIBITED.

Copyright 2024

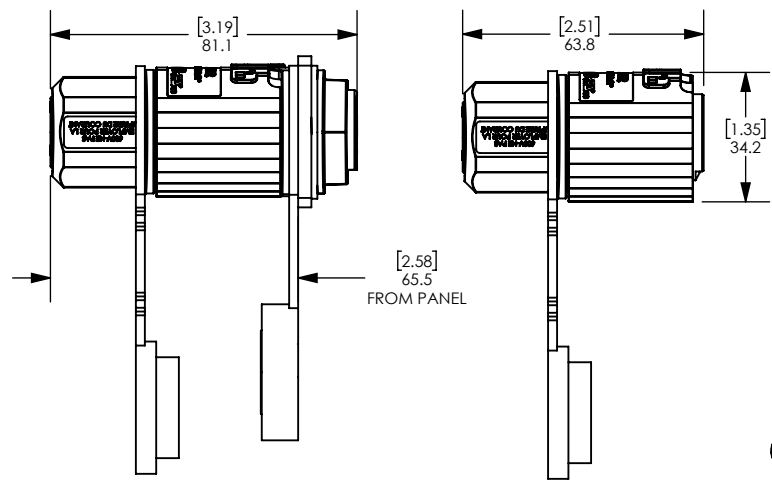
ANDERSON POWER PRODUCTS RESERVES THE RIGHT TO ALTER PRODUCT TYPES, THEIR TECHNICAL DATA, DIMENSION, STYLE AND ACCESSORIES WITHOUT PRIOR NOTIFICATION.

KIT PART NUMBER	KIT DESCRIPTION		
SK1-034M06	CONNECTOR KIT CONTAINING THE MALE PLUG CONNECTOR ASSEMBLY		
ITEM NUMBER	PART DESCRIPTION	MATERIAL	QTY
1	PIN CONTACT RETAINER	PC	1
2	PLUG HOUSING W/O-RING	PBT/PC	1
3	BAYONET LOCK	PBT/PC	1
4	CABLE SEALING GLAND W/ O-RING	PBT/PC	1
5	COMPRESSION NUT	PBT/PC	1
6	FLEXIBLE PLUG COVER	SANTOPRENE	1
7	203MM X 3.6MM CABLE TIE	POLYAMIDE	1



MATED LENGTH WITH PANEL MOUNT RECEPTACLE

SIDE VIEW



- NOTES:
- INGRESS PROTECTION: IP68 IN MATED CONDITION
*COVERS IP20 RATED WHEN CLOSED
 - CONTACTS AND GROMMET SOLD SEPARATELY
 - CONTACTS AVAILABLE AS CRIMP OR SOLDER TERMINATIONS
 - MAX INSULATION DIAMETER:
POWER: 6.73MM [.265in]
AUX: 1.98 MM [.078in]

DIMENSIONS ARE IN:	MM [INCH]	APPROVALS		ANDERSONPOWER™	
UNLESS OTHERWISE STATED		DRAWN	1/5/2024	TITLE	
TOLERANCES:		CHECKED	5/10/2024	6P MINI SPEC PAK® MALE PLUG KIT	
DECIMALS (INCH)	DECIMALS (MM)	ANGLES			
.XX ±.02	.X ±.5	±2°	MKT APPRV		
SURFACE FINISH:			CM	5/10/2024	
MACHINED 3.2µ [128µin] ✓			QC APPRV		
MOLDED 1.6µ [64µin] ✓			UFN	5/13/2024	
MATERIAL:			ENG APPRV	SIZE	DWG NO.
SEE TABLE			SH	A	116139S1
FINISH:				SCALE	CADFILE
				1:2	06072
				SHEET	REV.
				1 OF 2	0

REV.	DESCRIPTION	APPRV	DATE
REVISIONS			

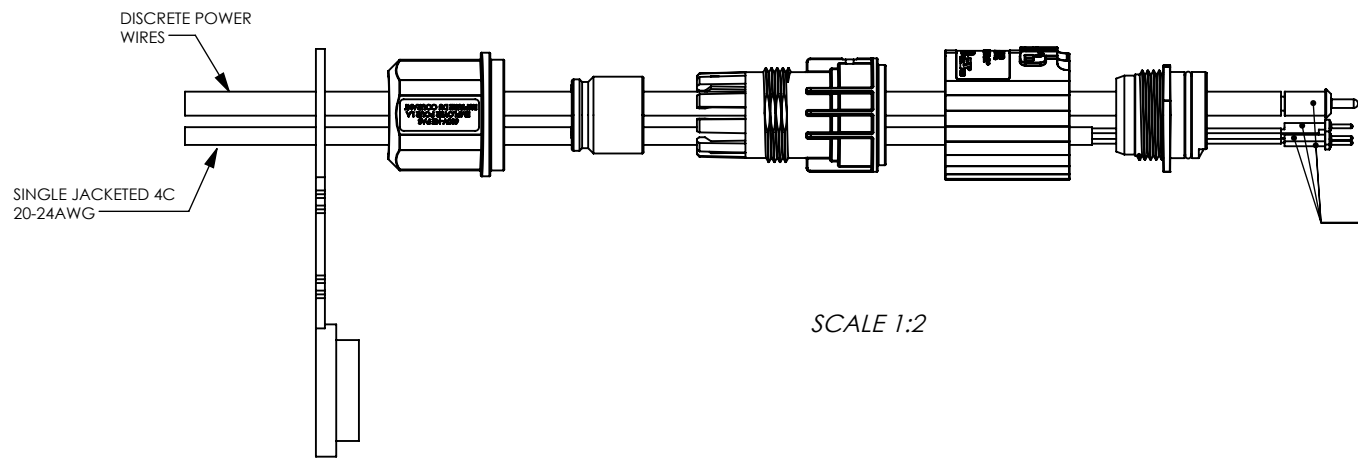
THE INFORMATION CONTAINED IN THIS DRAWING IS THE SOLE PROPERTY OF ANDERSON POWER PRODUCTS. ANY REPRODUCTION IN PART OR WHOLE WITHOUT THE WRITTEN PERMISSION OF ANDERSON POWER PRODUCTS IS PROHIBITED.

Copyright 2024

ANDERSON POWER PRODUCTS RESERVES THE RIGHT TO ALTER PRODUCT TYPES, THEIR TECHNICAL DATA, DIMENSION, STYLE AND ACCESSORIES WITHOUT PRIOR NOTIFICATION.

WIRE TERMINATION SEQUENCE FOR ASSEMBLY

**SINGLE JACKETED CABLE NOT SUPPORTED*



- STEPS:**
1. WIRES FED THROUGH ENTIRE ASSEMBLY & HOUSING
 2. AFTER WIRES FED THROUGH HOUSING, CONTACTS MAY BE CRIMPED/SOLDERED

SCALE 1:2

DIMENSIONS ARE IN:		MM [INCH]		ANDERSONPOWER™	
UNLESS OTHERWISE STATED					
TOLERANCES:					
DECIMALS (INCH)	DECIMALS (MM)	ANGLES		TITLE 6P MINI SPEC PAK® MALE PLUG KIT	
.XX ± .02	.X ± .5	±2°			
SURFACE FINISH:					
MACHINED	3.2µ [128µin]	✓		COA NO. 4357	
MOLDED	1.6µ [64µin]	✓			
MATERIAL: SEE TABLE					
FINISH:					
SIZE A		DWG NO. 116139S1		REV. 0	
SCALE NONE		CADFILE 06072		SHEET 2 OF 2	

