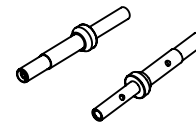


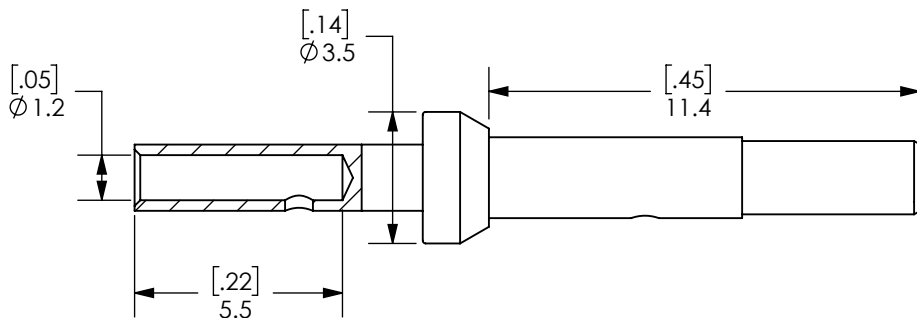
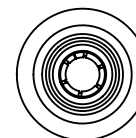
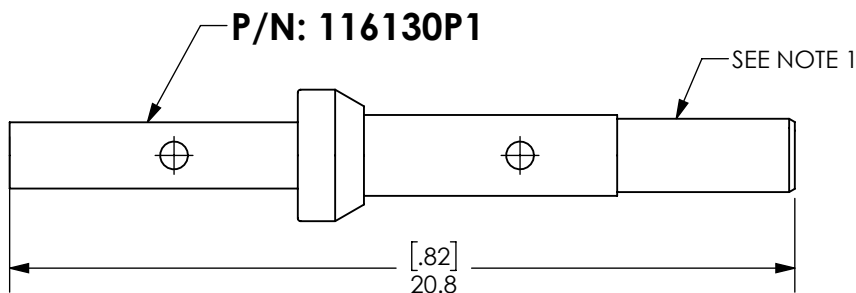
THE INFORMATION CONTAINED IN THIS DRAWING IS THE SOLE PROPERTY OF ANDERSON POWER PRODUCTS. ANY REPRODUCTION IN PART OR WHOLE WITHOUT THE WRITTEN PERMISSION OF ANDERSON POWER PRODUCTS IS PROHIBITED.

Copyright 2024

ANDERSON POWER PRODUCTS RESERVES THE RIGHT TO ALTER PRODUCT TYPES, THEIR TECHNICAL DATA, DIMENSION, STYLE AND ACCESSORIES WITHOUT PRIOR NOTIFICATION.



ACTUAL SIZE



NOTES:

1. MATERIAL: COPPER ALLOY (MAY INCLUDE STAINLESS STEEL HOOD)
2. FINISH:
 - A. SOCKET INSERT: GOLD PLATE
 - B. CONTACT BODY: GOLD OVER NICKEL PLATE
3. TERMINATE CONTACT AFTER WIRE INSERTED THROUGH HOUSING
4. FOR USE IN 6P MINI SPEC PAK® ONLY
5. SOLDER CUP TERMINATION AVAILABLE UPON REQUEST

DIMENSIONS ARE IN:		MM [INCH]		<i>APPROVALS</i>		ANDERSONPOWER™	
UNLESS OTHERWISE STATED							
TOLERANCES:				DRAWN	12/28/2023	TITLE 6P MINI SPEC PAK® #20-24 AWG [0.50-0.25MM ²] SOCKET	
DECIMALS (INCH)	DECIMALS (MM)	ANGLES		CHECKED	5/14/2024		
.XX ±.02	.X ±.5	±2°		MKT APPRV	5/16/2024	COA 4357	
SURFACE FINISH:				CM			
MACHINED 3.2µ [128µin] ✓				QC APPRV	5/23/2024	SIZE A	
MOLDED 1.6µ [64µin] ✓				MV			
MATERIAL:				SH	5/22/2024	SCALE NONE	

FINISH:						SHEET 1 OF 1	

REV.	DESCRIPTION	APPRV	DATE
REVISIONS			



-CAD GENERATED DRAWING-
DO NOT MANUALLY UPDATE
DO NOT SCALE