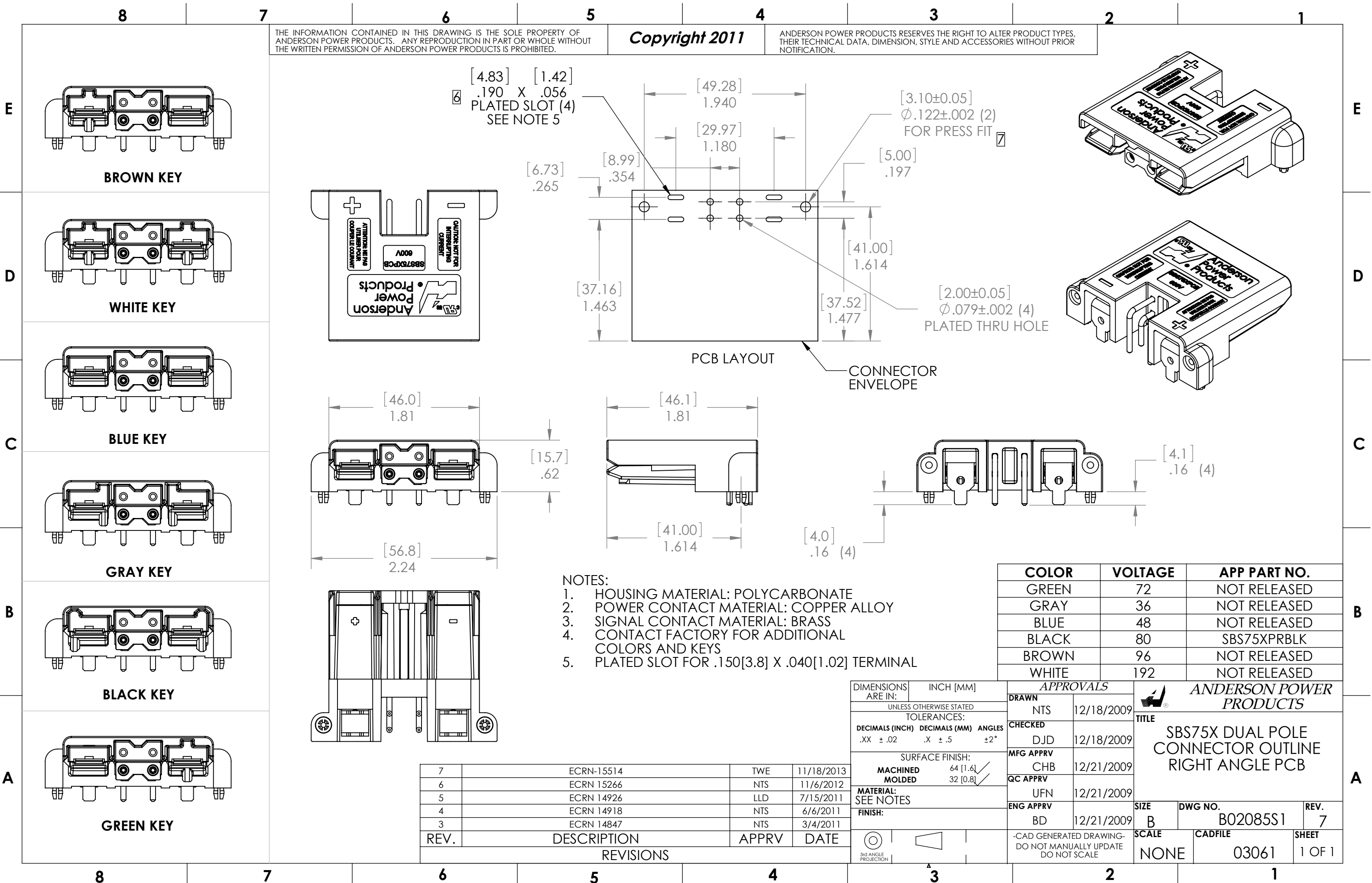


THE INFORMATION CONTAINED IN THIS DRAWING IS THE SOLE PROPERTY OF ANDERSON POWER PRODUCTS. ANY REPRODUCTION IN PART OR WHOLE WITHOUT THE WRITTEN PERMISSION OF ANDERSON POWER PRODUCTS IS PROHIBITED.

Copyright 2011

ANDERSON POWER PRODUCTS RESERVES THE RIGHT TO ALTER PRODUCT TYPES, THEIR TECHNICAL DATA, DIMENSION, STYLE AND ACCESSORIES WITHOUT PRIOR NOTIFICATION.



[4.83] [1.42]
 .190 X .056
 PLATED SLOT (4)
 SEE NOTE 5

[3.10±0.05]
 Ø.122±0.002 (2)
 FOR PRESS FIT

[2.00±0.05]
 Ø.079±0.002 (4)
 PLATED THRU HOLE

PCB LAYOUT

CONNECTOR ENVELOPE

- NOTES:
1. HOUSING MATERIAL: POLYCARBONATE
 2. POWER CONTACT MATERIAL: COPPER ALLOY
 3. SIGNAL CONTACT MATERIAL: BRASS
 4. CONTACT FACTORY FOR ADDITIONAL COLORS AND KEYS
 5. PLATED SLOT FOR .150[3.8] X .040[1.02] TERMINAL

COLOR	VOLTAGE	APP PART NO.
GREEN	72	NOT RELEASED
GRAY	36	NOT RELEASED
BLUE	48	NOT RELEASED
BLACK	80	SBS75XPRBLK
BROWN	96	NOT RELEASED
WHITE	192	NOT RELEASED

DIMENSIONS ARE IN:		APPROVALS		ANDERSON POWER PRODUCTS		
INCH	[MM]	DRAWN	NTS	12/18/2009	TITLE	
UNLESS OTHERWISE STATED		CHECKED	DJD	12/18/2009	SBS75X DUAL POLE CONNECTOR OUTLINE RIGHT ANGLE PCB	
TOLERANCES:		MFG APPRV	CHB	12/21/2009	SIZE	DWG NO.
DECIMALS (INCH)	DECIMALS (MM)	QC APPRV	UFN	12/21/2009	B	B02085S1
.XX ±.02	.X ±.5	ENG APPRV	BD	12/21/2009	SCALE	CADFILE
ANGLES ±2°				NONE		REV. 7
SURFACE FINISH:				SHEET		1 OF 1
MACHINED 64 [1.6]				03061		
MOLDED 32 [0.8]						
MATERIAL: SEE NOTES						
FINISH:						
3rd ANGLE PROJECTION						

REV.	DESCRIPTION	APPRV	DATE
7	ECRN-15514	TWE	11/18/2013
6	ECRN 15266	NTS	11/6/2012
5	ECRN 14926	LLD	7/15/2011
4	ECRN 14918	NTS	6/6/2011
3	ECRN 14847	NTS	3/4/2011

REVISIONS