

8

7

6

5

4

3

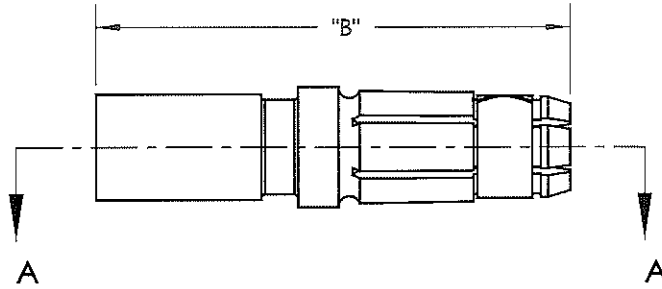
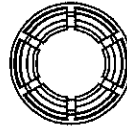
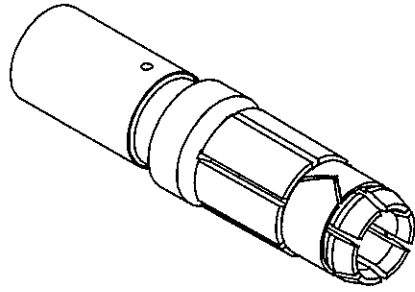
2

1

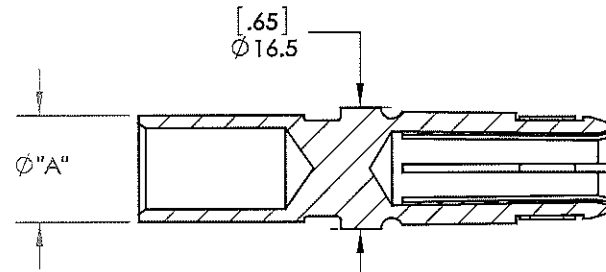
THE INFORMATION CONTAINED IN THIS DRAWING IS THE SOLE PROPERTY OF ANDERSON POWER PRODUCTS. ANY REPRODUCTION IN PART OR WHOLE WITHOUT THE WRITTEN PERMISSION OF ANDERSON POWER PRODUCTS IS PROHIBITED.

Copyright 2005

ANDERSON POWER PRODUCTS RESERVES THE RIGHT TO ALTER PRODUCT TYPES, THEIR TECHNICAL DATA, DIMENSION, STYLE AND ACCESSORIES WITHOUT PRIOR NOTIFICATION.



CAT. NO.	DESCRIPTION	"A"	"B"
320-1150	320A SOCKET (50MM OR 1/0 AWG WIRE)	14.5[.57]	64.5[2.54]
320-1170	320A SOCKET (70MM OR 2/0 AWG WIRE)	17.0[.67]	64.5[2.54]
320-1195	320A SOCKET (95MM OR 3/0 AWG WIRE)	19.8[.78]	69.5[2.73]
320-1104	320A SOCKET (4/0 AWG WIRE)	19.8[.78]	69.3[2.73]



SECTION A-A

DIMENSIONS ARE IN:		MM [INCH]	APPROVALS		ANDERSON POWER PRODUCTS
UNLESS OTHERWISE STATED			DRAWN	AMP	
TOLERANCES:			CHECKED	DJD	5/17/2005
DECIMALS (INCH)	DECIMALS (MM)	ANGLES	MFG APPRV	CHB	5/3/2005
.XX ±.02	X ±.5	±2°	QC APPRV	UFN	5/13/2005
SURFACE FINISH:			ENG APPRV	DAM	5/13/2005
MACHINED	3.2µ [128µin]		SIZE	A	DWG NO. 320-1100S1
MOLDED	1.6µ [64µin]		REV.	2	
MATERIAL:			SCALE	NONE	CADFILE 02310
COPPER ALLOY			SHEET	1 OF 1	
FINISH:			-CAD GENERATED DRAWING- DO NOT MANUALLY UPDATE DO NOT SCALE		
SILVER PLATE					

REV.	DESCRIPTION	APPRV	DATE
2	ECRN-15809 MATCH DWG. TO PART	TWE	4/13/2015
1	ECRN-14047 REDUCE CONT. LG., ADD 320-1104	AMS	8/18/06
REVISIONS			

8

7

6

5

4

3

2

1