

8

7

6

5

4

3

2

1

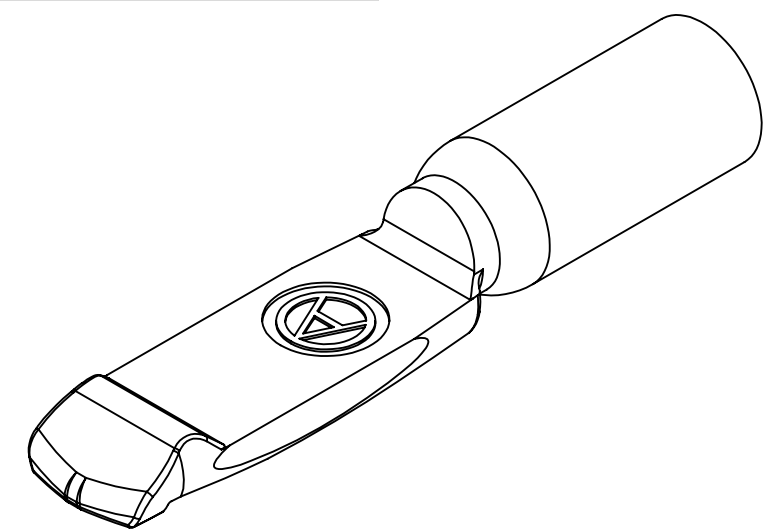
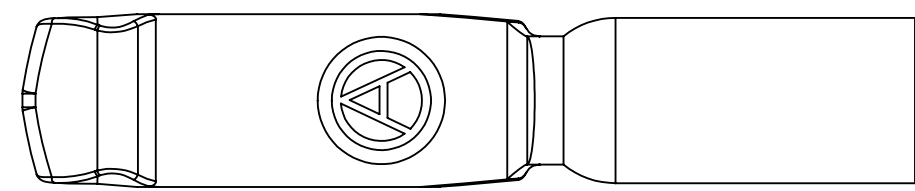
THE INFORMATION CONTAINED IN THIS DRAWING IS THE SOLE PROPERTY OF ANDERSON POWER PRODUCTS. ANY REPRODUCTION IN PART OR WHOLE WITHOUT THE WRITTEN PERMISSION OF ANDERSON POWER PRODUCTS IS PROHIBITED.

Copyright 2011

ANDERSON POWER PRODUCTS RESERVES THE RIGHT TO ALTER PRODUCT TYPES, THEIR TECHNICAL DATA, DIMENSION, STYLE AND ACCESSORIES WITHOUT PRIOR NOTIFICATION.

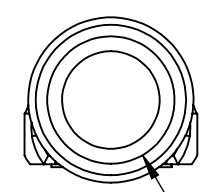
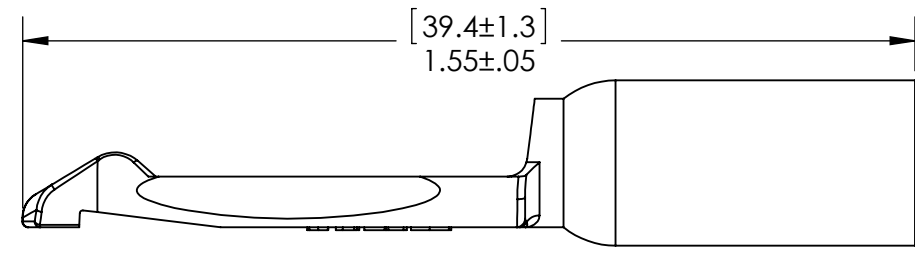
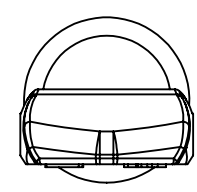
E

E



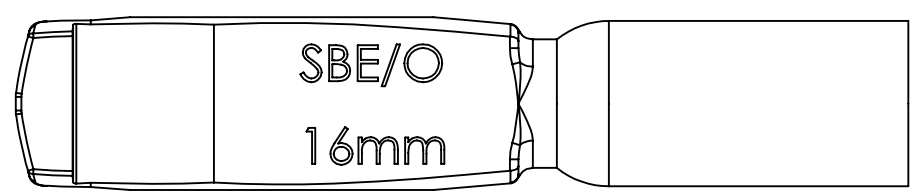
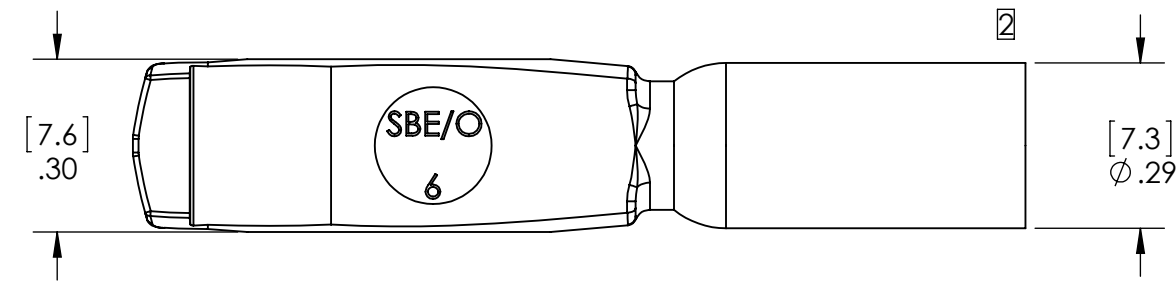
D

D



C

C

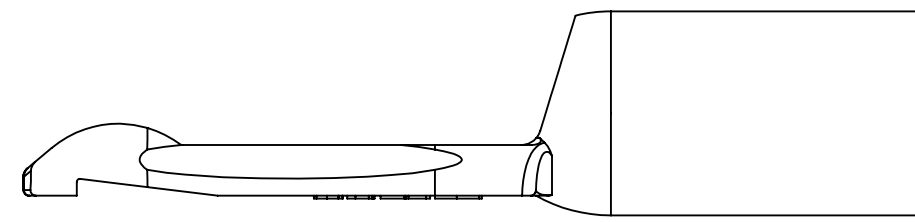


ALTERNATE MARKING

B

B

1339G4 ALTERNATE VIEWS

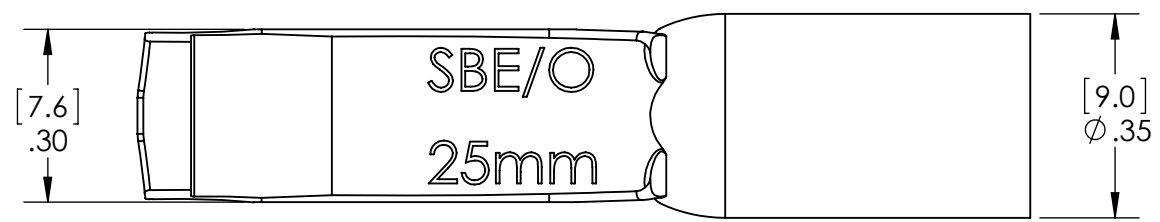


CAT. NO.	DETENT	WIRE GAGE	øA
1339G1	HIGH	6 AWG[16MM]	ø.22[5.7]
1339G4	LOW	25MM	ø.28[7.6]

NOTE:
1. 1339G1 SHOWN EXCEPT AS NOTED

A

A



DIMENSIONS ARE IN:		INCH [MM]		APPROVALS		ANDERSON POWER PRODUCTS	
UNLESS OTHERWISE STATED				DRAWN	CMS	6/7/2001	 TITLE OUTLINE: 1339G SERIES CONTACTS FOR SBE80/SB060
TOLERANCES:				CHECKED	DJD	6/7/2001	
DECIMALS (INCH)	DECIMALS (MM)	ANGLES		MFG APPRV	CHB	6/7/2001	
.XX ± .02	.X ± .5	±2°		QC APPRV	UFN	6/11/2001	
SURFACE FINISH:				ENG APPRV	RPO	6/11/2001	SIZE
MACHINED	64 [1.6]						DWG NO.
MOLDED	32 [0.8]						B01853S1
MATERIAL:		COPPER					REV.
FINISH:		SILVER PLATE					2
							SCALE
							NONE
							CADFILE
							01455
							SHEET
							1 OF 1

REV.	DESCRIPTION	APPRV	DATE
2	ECRN-15240	TWE	9/21/2012
1	ECRN-15034	NTS	1/5/12

REVISIONS

8

7

6

5

4

3

2

1